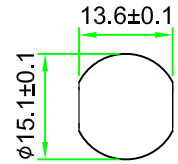


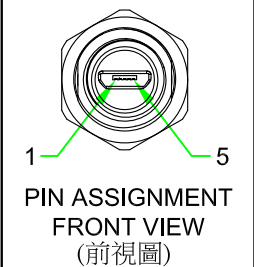
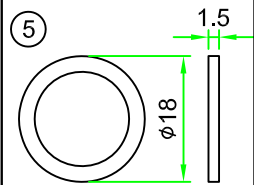
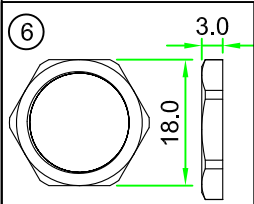
REV	DESCRIPTION	DATE
A	ISSUE	MAR/02/2017



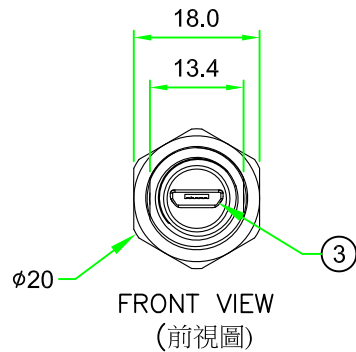
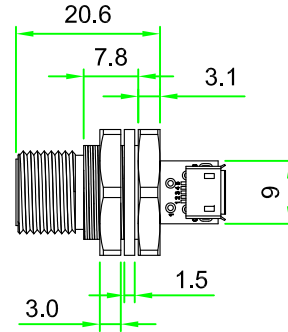
RECOMMENDED
PANEL CUT OUT

RoHS

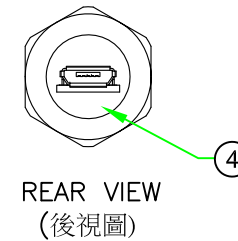
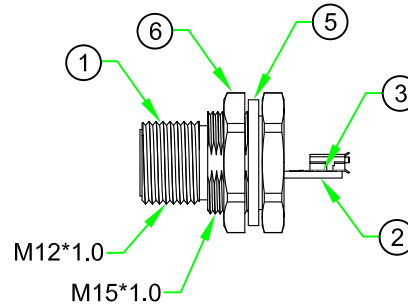
IP66~68



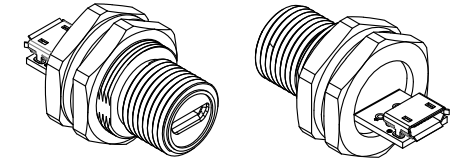
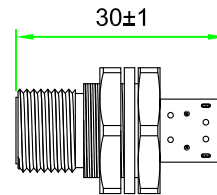
PIN ASSIGNMENT
FRONT VIEW
(前視圖)



FRONT VIEW
(前視圖)



REAR VIEW
(後視圖)



Notes:

Electrical Characteristics:
 Current Rating : 1A .
 Voltage : 30V.
 Insulation Resistance : >100 MΩ.
 Contact Resistance : < 40 mΩ.
 Connector Temperature Range :
 -30°C TO +80°C
 Dielectric Withstanding Voltage:
 100V AC For One Minute
 Panel Thickness : 3.0mm Max.

No.	PART NAME	DESCRIPTION	COLOR	Q'TY	REMARKS
6	HEX NUT	Nylon+GF.	BLACK	1	
5	GASKET	EPDM.	BLACK	1	
4	GLUE	Epoxy.	BLACK	1	
3	CONNECTOR	Micro USB B Female 5 Pin PCB Connector.	BLACK	2	
2	PCB	FR4. 1.0mm Thickness. 4 layers.		1	
1	CONNECTOR	Connector Insert.Nylon+GF.	BLACK	1	

		TITLE : Micro USB B Type 5P Female to Female Rear Mount Hex Flange Panel Connector	
	UNIT: mm		
SCALE	1:1	DWG.NO: USBMCB12-P3CSJ AP.	
UNLESS OTHERWISE SPECIFIED TOLERANCES: .X ± 0.5 .XX ± 0.25 .XXX ± 0.1 ANGLE ± 1°			
REV. A	SHEET 1/1		