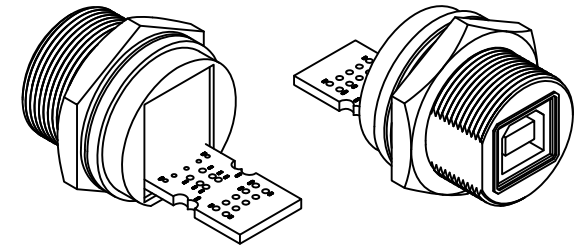
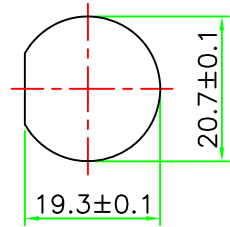


REV.	DESCRIPTION	DATE
A	ISSUE	Nov/15/2019



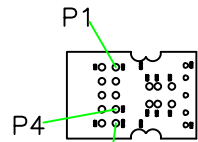
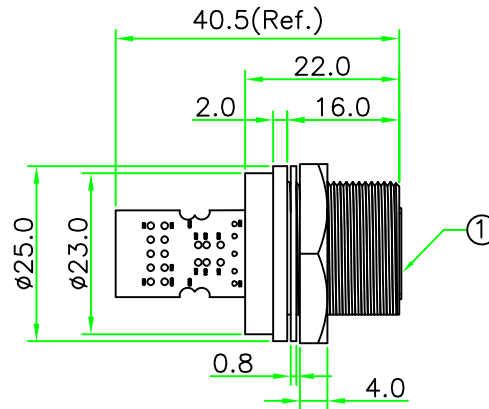
Notes:
 Current Rating : 1.5Amp
 Contact Resistance : 30m Ohm Max.
 Insulation Resistance : 100M Ohm Min.
 Breakdown Voltage : ≥ AC 500V/1 Minute.
 Operating Temperature : -25°C ~ +85°C.
 Panel Thickness Max. : 6mm.



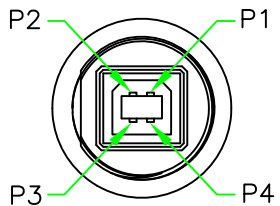
RECOMMENDED
 PANEL CUT OUT

RoHS

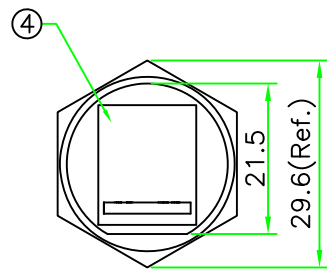
IP66~68



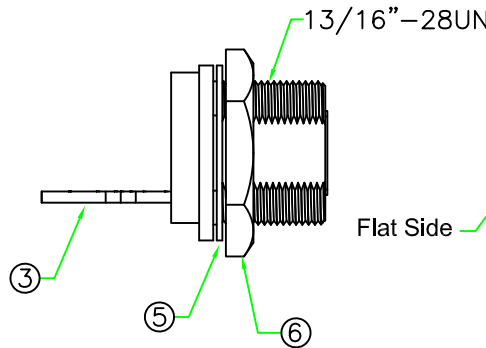
PIN ASSIGNMENT
 TOP VIEW
 (上視圖)



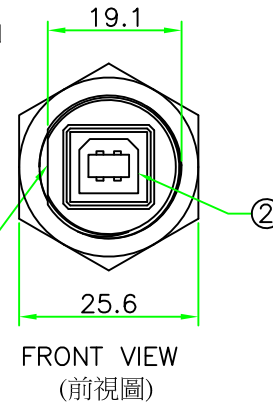
PIN ASSIGNMENT
 FRONT VIEW
 (前視圖)



REAR VIEW
 (後視圖)



Flat Side



FRONT VIEW
 (前視圖)

No.	PART NAME	DESCRIPTION	COLOR	Q'TY	REMARKS
6	HEX NUT	NYLON+GF.	BLACK	1	
5	GASKET	EPDM.	BLACK	1	
4	GLUE	EPOXY.	BLACK		
3	PCB	FR4. Double Size, 1.6mm Thickness.		1	
2	CONNECTOR	USB 2.0 B Type Female Connector.	WHITE	1	
1	BODY	USB B Type Female Connector Body. NYLON+GF.	BLACK	1	

UNIT: mm		TITLE :
SCALE	1:1	USB 2.0 B Type Female C Size Rear Mount Screw Type Circular Flange With Bare PCB
UNLESS OTHERWISE SPECIFIED TOLERANCES:		P/N: USB2BC-P3C10
.X ± 0.5	.XX ± 0.25	DR. SIBYL
.XXX ± 0.1	ANGLE ± 1°	CH. JAMES
REV. A	SHEET 1/1	DWG.NO: USB2BC-P3C10
		AP.