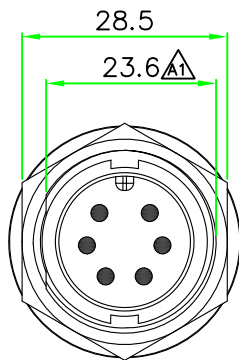
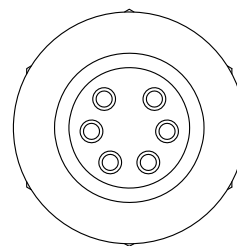
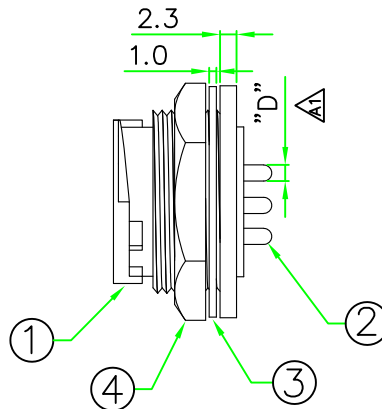
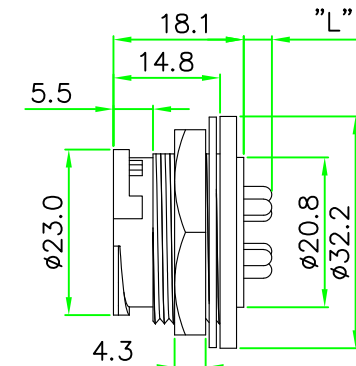


RECOMMENDED  
PANEL CUT OUT

**RoHS**  
**IP66~68**



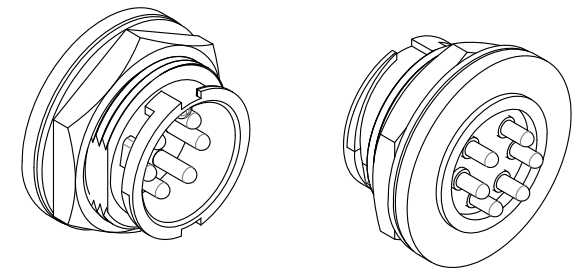
FRONT VIEW  
(前視圖)



REAR VIEW  
(後視圖)

P/N	L	D
CDG	3.9	φ2.25
CDD	3.7	φ1

REV.	DESCRIPTION	DATE
A	ISSUE	Feb/02/2018
A1	Correct Dimension & Note.	Feb/12/2019

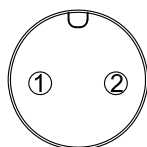


NOTES:

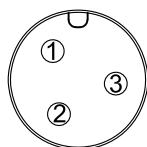
- ELECTRICAL CHARACTERISTICS:  
CURRENT RATING: 5A / 20A  
CONNECTOR TEMPERATURE RANGE: -25°C TO +85°C  
DIELECTRIC WITHSTANDING VOLTAGE:  
500V AC FOR ONE MINUTE
- PANEL THICKNESS MAX. 4.0mm
- HOW TO ORDER: CDx-L1xxCPR  $\Delta 1$

- 02 - 2 PIN 03 - 3 PIN
- 04 - 4 PIN 05 - 5 PIN
- 06 - 6 PIN 07 - 7 PIN
- 18 - 18 PIN

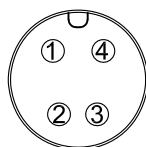
- G - CURRENT RATING 20A
- D - CURRENT RATING 5A



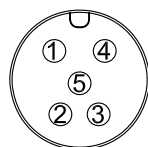
CDG-L102CPR



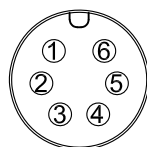
CDG-L103CPR



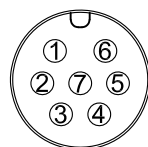
CDG-L104CPR



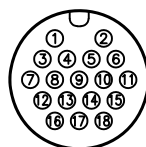
CDG-L105CPR



CDG-L106CPR



CDG-L107CPR



CDD-L118CPR

PIN ASSIGNMENT FRONT VIEW  
(前視圖)

4	HEX NUT	Nylon+GF.	BLACK	1	$\Delta 1$
3	GASKET	EPDM.	BLACK	1	
2	CONTACT	Brass, 6 u" Gold Plated. Male Contact.		N	
1	CONNECTOR	D Size Male Connector Insert. Nylon+GF.	BLACK	1	
No.	PART NAME	DESCRIPTION	COLOR	Q'TY	REMARKS

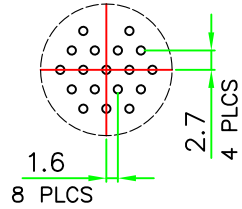


$\phi$	UNIT: mm	TITLE :	D Size Male Connector Rear Mount Lock Type Circular Flange PCB Mount Pin	
SCALE	1:1	P/N:	CDx-L1xxCPR	DR. SIBYL
UNLESS OTHERWISE SPECIFIED TOLERANCES: .x ± 0.25 .xx ± 0.1 .xxx ± 0.05 ANGLE ± 1°		REV.	SHEET	CH. ERIC
A1	1/2	DWG.NO:	CDx-L1xxCPR	AP.

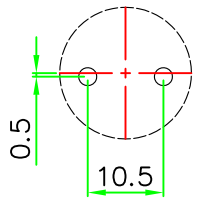
RoHS

IP66~68

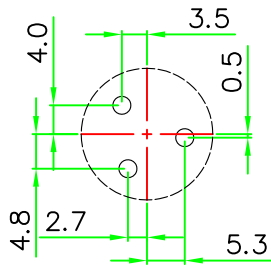
REV.	DESCRIPTION	DATE
A	ISSUE	Feb/02/2018
A1	Correct Dimension & Note.	Feb/12/2019



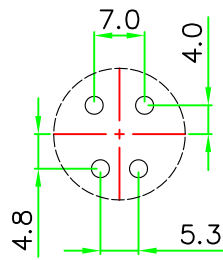
CDD-L118CPR



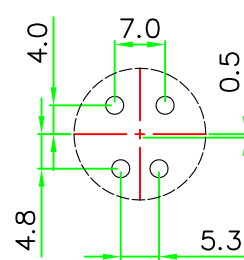
CDG-L102CPR



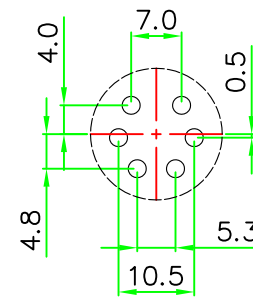
CDG-L103CPR



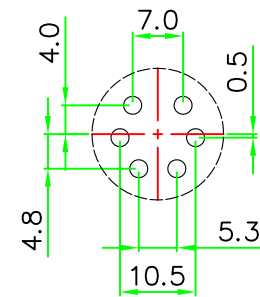
CDG-L104CPR



CDG-L105CPR



CDG-L106CPR



CDG-L107CPR

PCB LAYOUT

HOLIN® HTP ASIA TECHNOLOGY CO., LTD. 禾凌科技股份有限公司

	UNIT: mm	TITLE : D Size Male Connector Rear Mount Lock Type Circular Flange PCB Mount Pin	
SCALE	1:1		
UNLESS OTHERWISE SPECIFIED TOLERANCES: .x ± 0.25 .xx ± 0.1 .xxx ± 0.05 ANGLE ± 1°		P/N: CDx-L1xxCPR	DR. SIBYL
REV. A1	SHEET 2/2	DWG.NO: CDx-L1xxCPR	CH. ERIC
			AP.