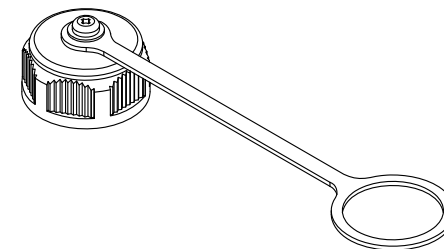
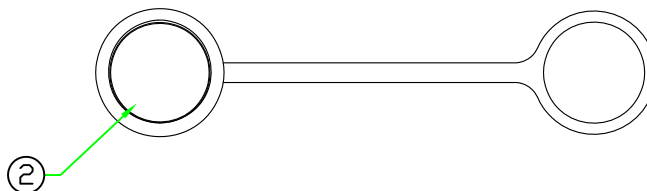
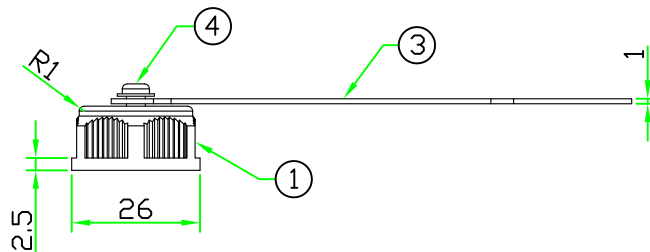
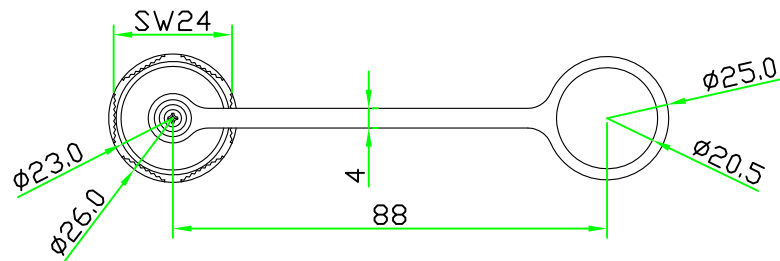
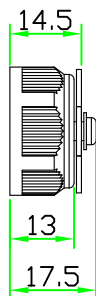
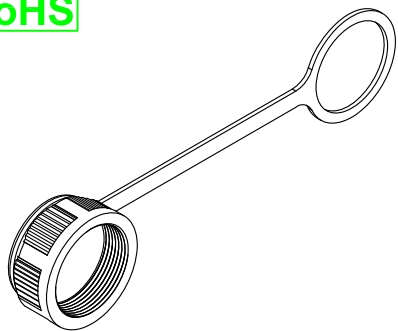


PROPRIETARY AND CONFIDENTIAL
 THE INFORMATION CONTAINED IN THIS DRAWING IS THE SOLE PROPERTY OF HTP ASIA TECHNOLOGY CO., LTD. .
 ANY REPRODUCTION IN PART OR AS A WHOLE WITHOUT THE WRITTEN PERMISSION OF HTP ASIA TECHNOLOGY CO., LTD. IS PROHIBITED.

RoHS



REV	DESCRIPTION	DATE
A	ISSUE	Mar/10/2009
A1	CHANGE P/N AND DWG.NO.	Feb/25/2014
A2	ADD NOTES	Mar/17/2014

NOTE:
 Maximum panel thickness:
 (適用面板最大厚度)
 C size series:2mm
 RJ45/USB/HDMI series:4mm
 C size front mount not available
 (不適用C size後鎖式板端接頭)



4	SCREW	STAINLESS STEEL.	BLACK	1	CCP-CAP-S3x6B
3	CHAIN	PLASTIC RUBBER	BLACK	1	CAP CHAIN-B (59-135)
2	GASKET	PLASTIC RUBBER	BLACK	1	
1	SCREW CAP	NYLON+GF.	BLACK	1	CCP-MCAP (70-135-N4)
No.	PART NAME	DESCRIPTION	COLOR	Q'TY	REMARKS

UNIT: mm	TITLE : WATERPROOF CAP SCREW TYPE WITH PLASTIC CHAIN FOR RJ45 ,C SIZE ,USB PANEL CONNECTOR
SCALE 1:1.5	
UNLESS OTHERWISE SPECIFIED TOLERANCES: X ±0.25 XX ± 0.1 XXX ± 0.05 ANGLE ± 1°X	P/N: CCx-WCAP-MB
REV. A2	DWG.NO: CCx-WCAP-MB
SHEET 1/1	
	DR. Patty CH. ERIC AP.