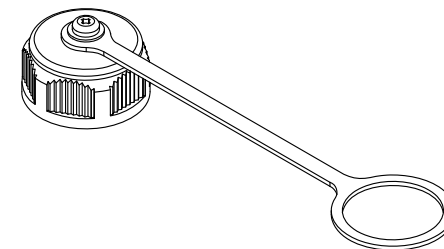
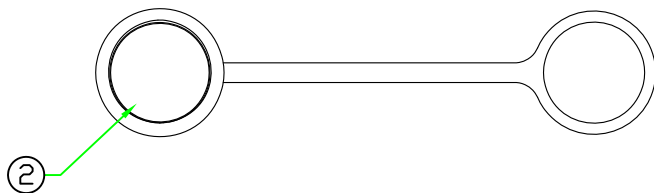
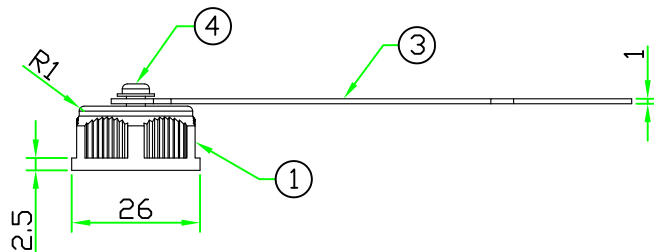
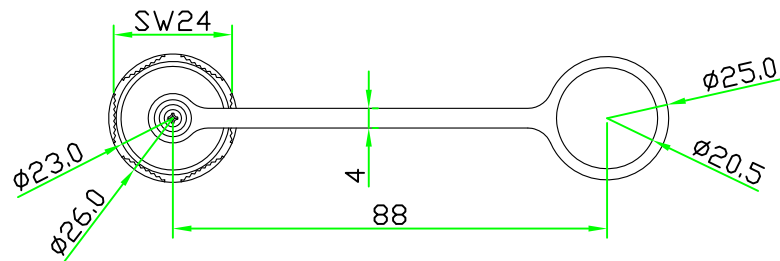
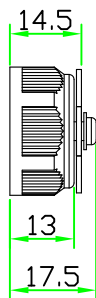
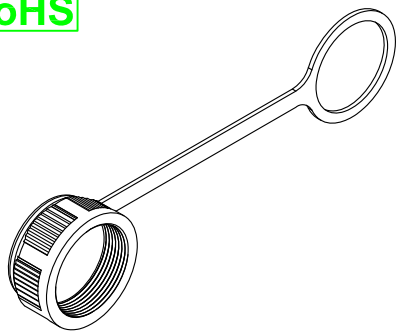


RoHS



REV	DESCRIPTION	DATE
A	ISSUE	Mar/10/2009
A1	CHANGE P/N AND DWG.NO.	Feb/25/2014
A2	ADD NOTES	Mar/17/2014

**NOTE:**  
 Maximum panel thickness:  
 (適用面板最大厚度)  
 C size series:2mm  
 RJ45/USB/HDMI series:4mm  
 C size front mount not available  
 (不適用C size後鎖式板端接頭)



No.	PART NAME	DESCRIPTION	COLOR	Q'TY	REMARKS	REV.	SHEET	DWG.NO:	DR.	CH.	AP.
4	SCREW	STAINLESS STEEL.	BLACK	1	CCP-CAP-S3x6B						
3	CHAIN	PLASTIC RUBBER	BLACK	1	CAP CHAIN-B (59-135)						
2	GASKET	PLASTIC RUBBER	BLACK	1							
1	SCREW CAP	NYLON+GF.	BLACK	1	CCP-MCAP (70-135-N4)						
						A2	1/1	CCx-WCAP-MB			
								CCx-WCAP-MB	Patty	ERIC	
								CCx-WCAP-MB			

UNIT: mm  
 SCALE: 1:1.5  
 TITLE: WATERPROOF CAP SCREW TYPE WITH PLASTIC CHAIN FOR RJ45, C SIZE, USB PANEL CONNECTOR  
 UNLESS OTHERWISE SPECIFIED TOLERANCES:  
 X ±0.25 XX ±0.1  
 XXX ±0.05 ANGLE ±1°  
 P/N: CCx-WCAP-MB  
 DWG.NO: CCx-WCAP-MB