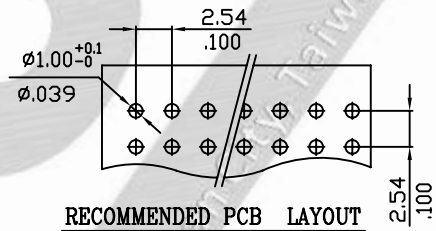
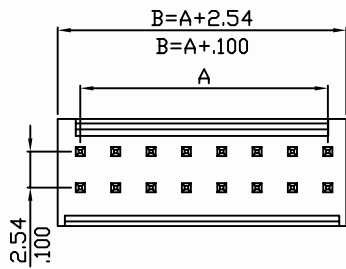
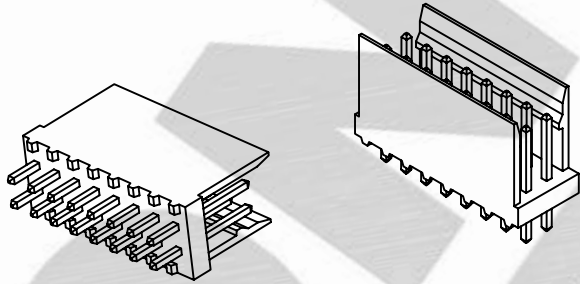


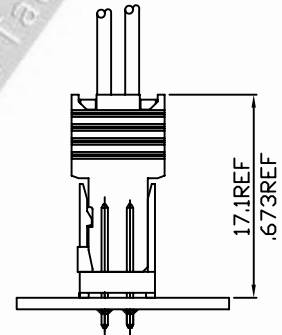
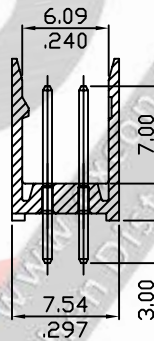
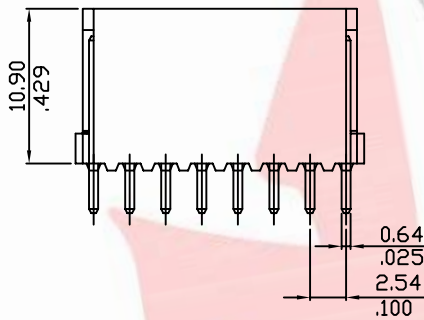
Wafer (Vertical type)

1. Part No.: 7806xxWV209
2. Part Name: 7806 Wafer
3. Material: PBT UL 94V0
Pin: Brass bronze, Tin plated
5. Color: Blue



RECOMMENDED PCB LAYOUT

(PCB T=1.0~1.6mm)
(PCB T=.039~.063in)



Mating Dimensions

Ordering Information and Dimensions:

Part No.	Circuits	Dim A	Part No.	Circuits	Dim A	Part No.	Circuits	Dim A
780604WV209	4	5.08(.200)	780618WV209	18	22.86(.900)	780632WV209	32	40.64(1.600)
780606WV209	6	7.62(.300)	780620WV209	20	25.40(1.000)	780634WV209	34	43.18(1.700)
780608WV209	8	10.16(.400)	780622WV209	22	27.94(1.100)	780636WV209	36	45.72(1.800)
780610WV209	10	12.70(.500)	780624WV209	24	30.48(1.200)	780638WV209	38	48.26(1.900)
780612WV209	12	15.24(.600)	780626WV209	26	33.02(1.300)	780640WV209	40	50.80(2.000)
780614WV209	14	17.78(.700)	780628WV209	28	35.56(1.400)			
780616WV209	16	20.32(.800)	780630WV209	30	38.10(1.500)			

Part Code Information:

7806-WW XX YYY

① ② ③ ④

① Series Name

② Circuits Number
04~40

③ Product Type

WV=Wafer (Vertical type)

④ Material/Finishing/Color

203=PBT 94V-0,Black Color
209=PBT 94V-0,Blue Color