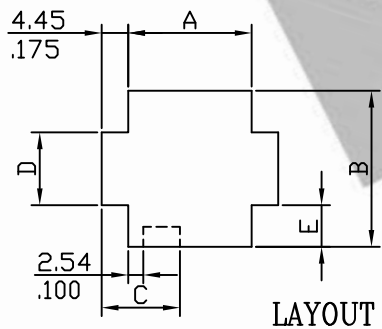
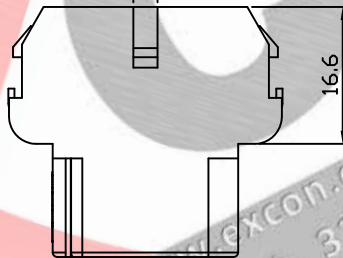
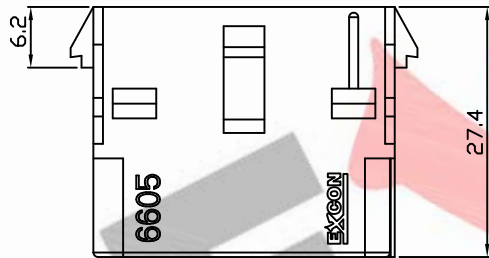
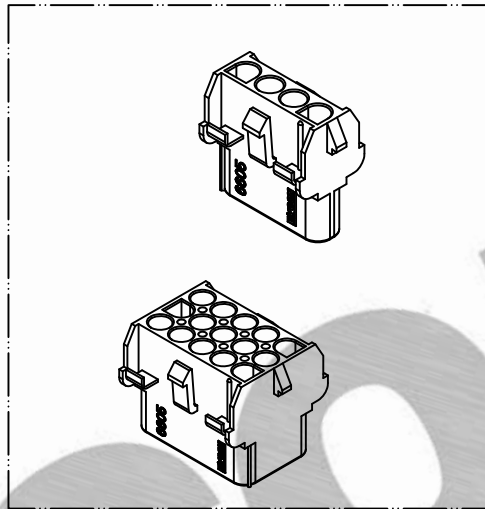
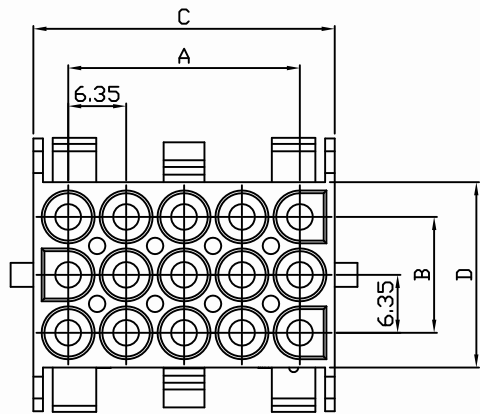
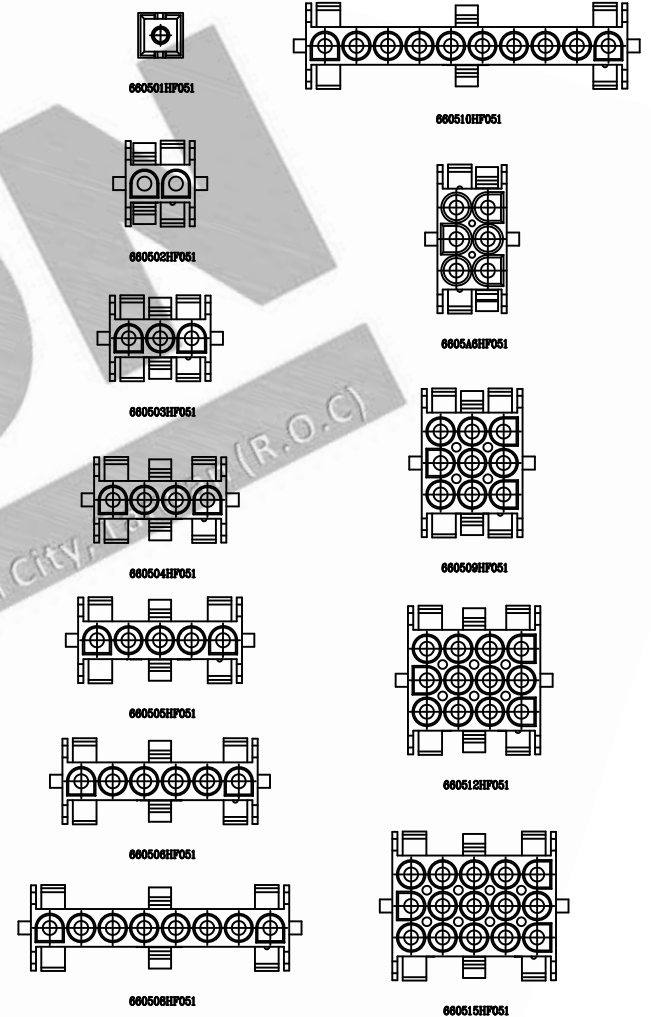


PART NO. 6605xxHF051
 DWG NO. C6605HF



Dimensional & Ordering Information:

Part No	POS.	A	B	C	D	E
660502HF051	2	14.35(.565)	13.45(.530)	6.35(.250)	8.65(.341)	2.40(.094)
660503HF051	3	20.70(.815)	13.45(.530)	6.35(.250)	8.65(.341)	2.40(.094)
660504HF051	4	27.05(1.065)	13.45(.530)	6.35(.250)	8.65(.341)	2.40(.094)
660505HF051	5	33.40(1.315)	13.45(.530)	6.35(.250)	8.65(.341)	2.40(.094)
660506HF051	6	39.80(1.567)	13.45(.530)	10.0(.394)	8.65(.341)	2.40(.094)
6605A6HF051	A6	14.35(.565)	26.15(1.030)	6.35(.250)	12.20(.480)	7.00(.276)
660508HF051	8	52.50(2.067)	13.45(.530)	10.0(.394)	8.65(.341)	2.40(.094)
660509HF051	9	20.70(.815)	26.15(1.030)	6.35(.250)	12.20(.480)	7.00(.276)
660510HF051	10	65.20(2.567)	13.45(.530)	10.0(.394)	8.65(.341)	2.40(.094)
660512HF051	12	27.05(1.065)	26.15(1.030)	8.90(.350)	12.20(.480)	7.00(.276)
660515HF051	15	33.40(1.315)	26.15(1.030)	8.90(.350)	12.20(.480)	7.00(.276)



NOTE:

1. Housing Material: Nylon 66 UL94V2
2. Color: Natural
3. Withstand voltage: 5000V AC/minute.
4. Current rating: 5A AC/DC.
5. Voltage rating: 600V AC/DC

UNLESS OTHERWISE SPECIFIED TOLERANCES
 3 PLACE ±0.5 ±0.10
 2 PLACE ±1.5 ±0.25
 1 PLACE ±2.0 ±0.50
 ANGLE DIM

EXCON
 EXCON TECHNOLOGY COMPANY

REV.	REVISION	DIS	DATE	DWG NO:	PART.NO
SCALE	REV.	PAGE:	UNIT	THIRD ANGLE PROJECTION	C6605HF
1/1	A	1			6605xxHF051