

IDC CONNECTOR DIP TYPE

5440 SERIES - 1.27MM



Specifications

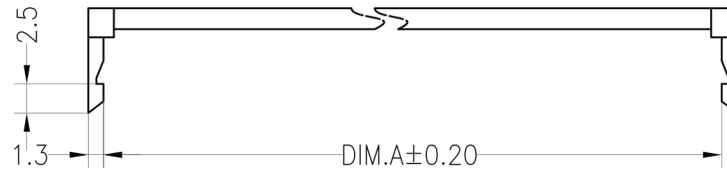
- Rated current: 1.0AMP
- Contact resistance: 30mΩ max
- Withstand Voltage: 500V AC/DC
- Insulation resistance: 1000MΩ min
- Operation temperature: -40°C to +105°C
- Contact material: Brass/Phosphore bronze
- Contact plating: Au Or Sn Over Ni
- Insulator material: Polyester (UL94V-0)
- Standard: PBT
- Max. processing Temp: 180°C for 30-60 seconds
200°C for 10 seconds

Ordering Information

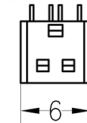
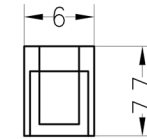
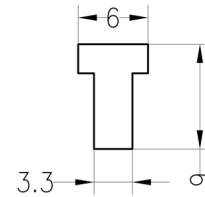
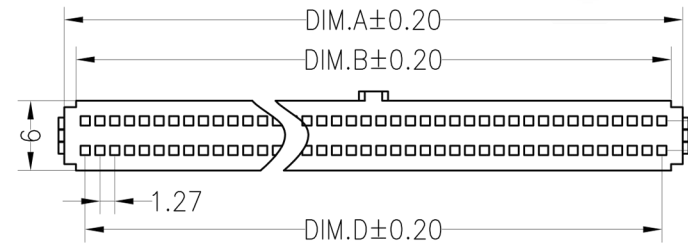
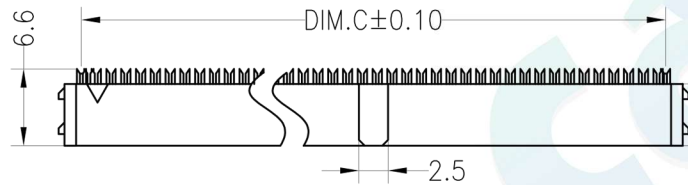
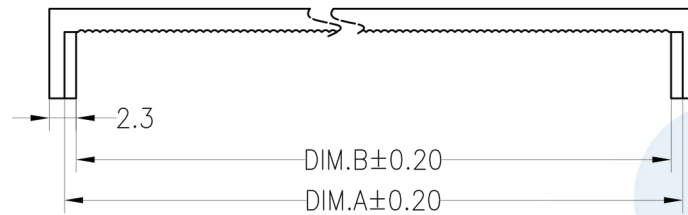
5440D - XX X X X 04

1
2
3
4
5

- 1. Connector Series**
- 2. Number of pins (20→100P)**
- 3. Contact plating**
 - A = Gold Flash/Ni
 - B = Gold Flash
- 4. Connecteur Type**
 - B = Brass
 - P = Phosphore bronze
- 5. Option Type**
 - W = With Bump
 - Ø = Without Bump



Strain Reliefe



W=With Bump

N=Without Bump

NO.OF.PINS	A	B	C	D
20	14.90	13.00	12.07	11.43
26	18.71	16.81	15.88	15.24
30	21.25	19.35	18.42	17.78
34	23.79	21.89	20.96	20.32
40	27.60	25.70	24.77	24.13
50	33.95	32.05	31.12	30.48
68	45.38	43.48	42.55	41.91
80	53.00	51.10	50.17	49.53
100	65.70	63.80	62.87	62.23

REV	DATE	MODIFICATION DESCRIPTION	CHANGE	OPERATION	DRAW	BEN	12.04.18	SCALE	FIT
A0	2012.04.18	NEW DRAWING		X.X ±0.30				UNIT	mm
				X.XX ±0.20	CHECK			SIZE	A4
				X.XXX ±0.10				SHEET	1/1
				Angle ±3°	APPROVE			PROJ.	◆
				DIM					
				TOL					



PART NO.	5440D - XXXXX 04
TITLE:	1.27*2.54 IDC NPin