

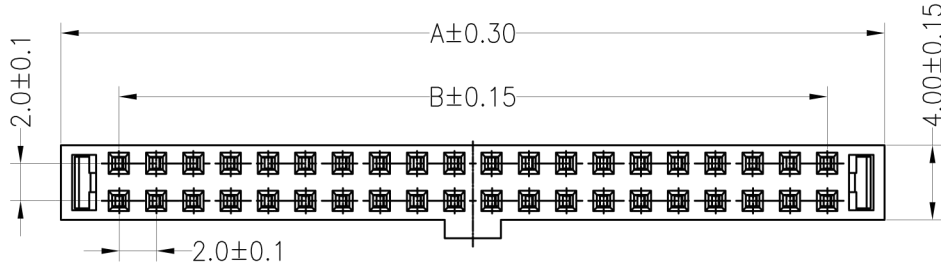
IDC CONNECTOR DIP S-TYPE

5420 SERIES - 2.00MM



Specifications

- Rated current: 1.0AMP
- Contact resistance: 20Ω max
- Withstand Voltage: 500V AC/Min
- Insulation resistance: 1000MΩ min
- Operation temperature: -40°C to +105°C
- Contact material: Phosphore bronze
- Contact plating: Au Or Sn Over Ni
- Insulator material: Polyester (UL94V-0)
- Standard: PBT
- Max. processing Temp: 180°C for 30-60 seconds
200°C for 10 seconds



Pin	Dimension mm		
	A	B	C
06	10.20	4.00	5.00
08	12.20	6.00	7.00
10	14.20	8.00	9.00
12	16.20	10.00	11.00
14	18.20	12.00	13.00
16	20.20	14.00	15.00
18	22.20	16.00	17.00
20	24.20	18.00	19.00
24	28.20	22.00	23.00
26	30.20	24.00	25.00
30	34.20	28.00	29.00
34	38.20	32.00	33.00
40	44.20	38.00	39.00
44	48.20	42.00	43.00
50	54.20	48.00	49.00
60	64.20	58.00	59.00
64	68.20	62.00	63.00

Ordering Information

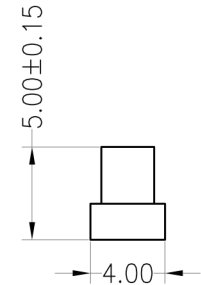
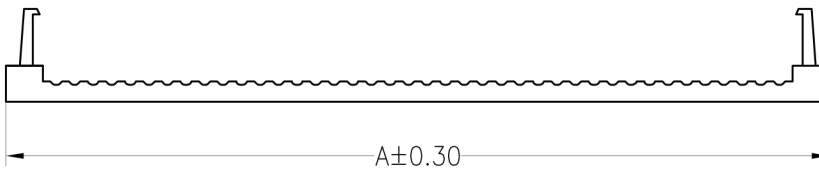
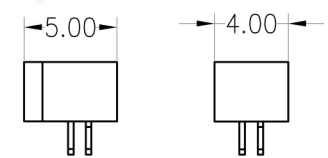
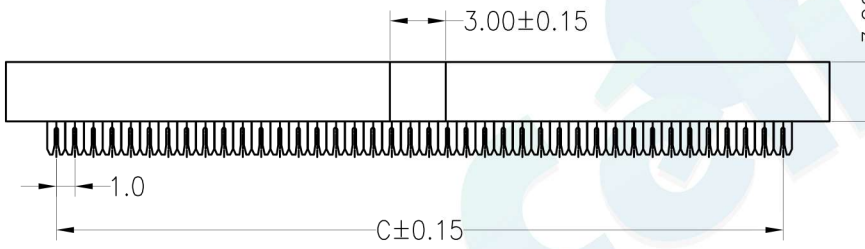
5420DS - XX X P B X
1 2 3 4


1. Connector Series
2. Number of pins (6→64P)
3. Contact plating

- A = Gold Flash
- B = Gold Flash/Ni
- C = 3U" Gold/Ni
- D = 5U" Gold/Ni
- E = 10U" Gold/Ni
- F = 20U" Gold/Ni
- G = 30U" Gold/Ni
- H = Ni

4. Option Type

- W = With Bump
- Ø = Without Bump



REVISION			OPERATION		DRAW	BEN	12.04.18	SCALE	FIT	 votre partenaire en électronique	
REV	DATE	MODIFICATION DESCRIPTION	DIM	TOL							
A0	2012.04.18	NEW DRAWING	X.X	±0.30	CHECK			UNIT	mm	PART NO.	5420DS - XXXPBX
			X.XX	±0.20							
			X.XXX	±0.10							
			Angle	±3°	APPROVE			SHEET	1/1	TITLE:	2.00 FC(IDC) S-Type NPin
1	2	3	4	5	6	7	8	9			