

IDC CONNECTOR DIP TYPE

5420 SERIES - 2.00MM



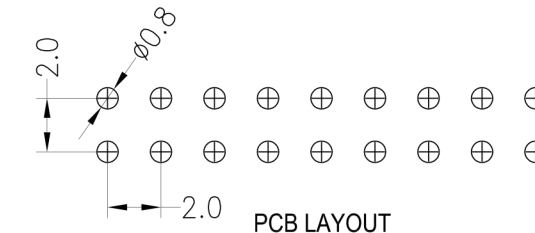
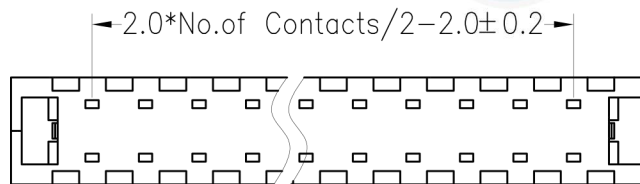
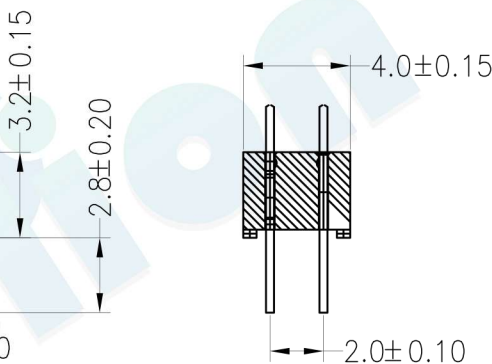
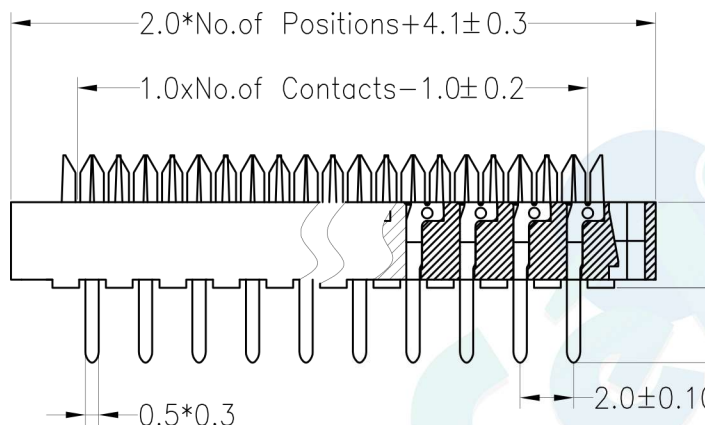
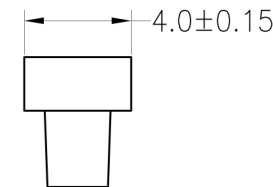
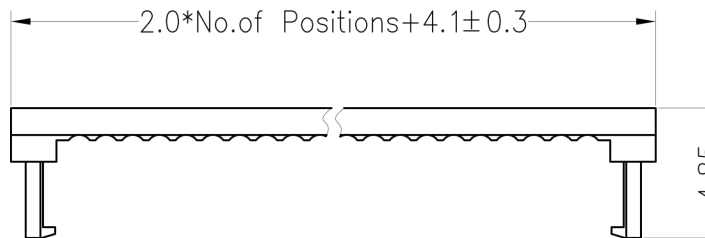
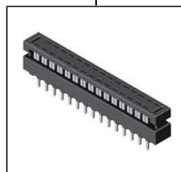
Specifications


- Rated current: 1.0AMP
- Contact resistance: 20Ω max
- Withstand Voltage: 500V AC/Min
- Insulation resistance: 1000MΩ min
- Operation temperature: -40°C to +105°C
- Contact material: Brass
- Contact plating: Au Or Sn Over Ni
- Insulator material: Polyester (UL94V-0)
- Standard: PBT
- Max. processing Temp: 180°C for 30-60 seconds
200°C for 10 seconds

Ordering Information

5420D - XX X B X 01

- 1. Connector Series**
- 2. Number of pins (4→80P)**
- 3. Contact plating**
 - A = Tin
 - B = Gold Flash
 - C = 5U" Gold
 - D = 10U" Gold
 - E = 15U" Gold
 - F = 30U" Gold
 - G = Gold Flash/Tin
- 4. Connecteur Type**
 - B = Brass
- 5. Color type**
 - A = Black
 - B = Grey



				OPERATION		DRAW	BEN	12.04.18	SCALE	FIT	 votre partenaire en électronique	
				X.X	±0.30							
A0	2012.04.18	NEW DRAWING		X.XXX	±0.10	APPROVE			SHEET	1/1	TITLE:	2.00 DIP NPin
REV	DATE	MODIFICATION DESCRIPTION	CHANGE	DIM	TOL		PROJ.					