

# MINI JUMPER OPEN TYPE

3811 SERIES - 2.00MM



## Specifications

- Rated current: 1.5AMP
- Contact resistance: 20mΩ max
- Withstand Voltage: 500V AC/DC
- Insulation resistance: 1000MΩ min
- Operation temperature: -40°C to +105°C
- Contact material: Phosphore bronze
- Contact plating: Au Over Ni
- Insulator material: Polyester (UL94V-0)
- Standard: PA66
- Max. processing Temp: 230°C for 30-60 seconds  
260°C for 10 seconds

## Ordering Information

**3811 X 1 - X X O 01**

1
2
3
4
5

### 1. Connector Series

### 2. Plastics height

- A = 9.5mm

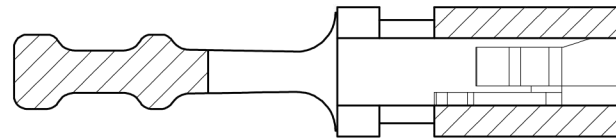
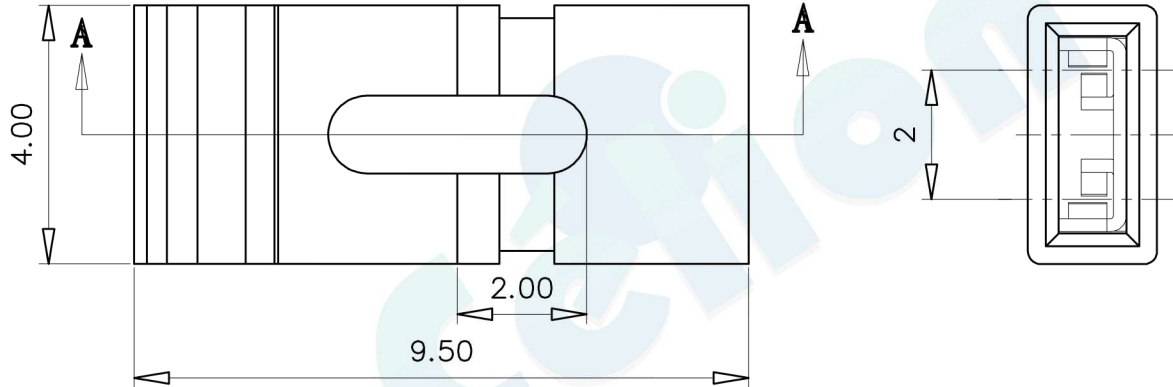
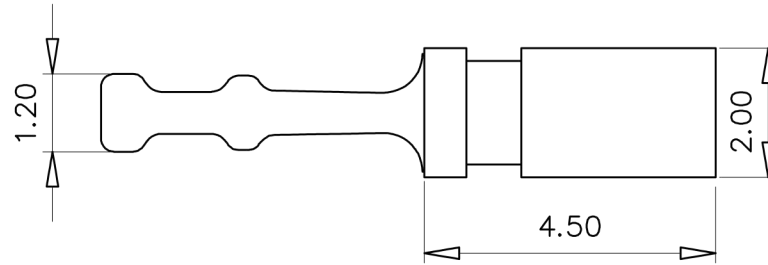
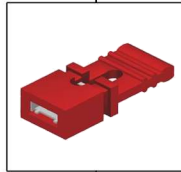
### 3. Number of pins (1 = Single type)


### 4. Contact plating

- A = 0.8U" Gold
- B = 1U" Gold
- C = 1.5U" Gold
- D = 2U" Gold
- E = 3U" Gold
- F = 5U" Gold
- G = Gold Flash/Ni
- H = Ni

### 5. Color type

- A = Black
- B = Blue
- C = Red
- D = White
- E = Yellow



|     |      |                          |        |           |       |         |     |          |       |          |   |  |                         |
|-----|------|--------------------------|--------|-----------|-------|---------|-----|----------|-------|----------|---|--|-------------------------|
|     |      |                          |        | OPERATION |       | DRAW    | BEN | 12.04.18 | SCALE | FIT      | <br>votre partenaire en électronique |  |                         |
|     |      |                          |        | X.X       | ±0.30 |         |     |          | UNIT  | mm       |   |  |                         |
|     |      |                          |        | X.XX      | ±0.20 | CHECK   |     | SIZE     | A4    | PART NO. |   |  | 3811X1 - XXO 01         |
|     |      |                          |        | X.XXX     | ±0.10 | APPROVE |     | SHEET    | 1/1   | TITLE:   |   |  | 2.00 Mini Jumper 1*2Pin |
| REV | DATE | MODIFICATION DESCRIPTION | CHANGE | Angle     | ±3°   |         |     | PROJ.    |       |          |   |  |                         |
| 1   | 2    | 3                        | 4      | DIM       | TOL   | 5       | 6   | 7        | 8     | 9        |   |  |                         |