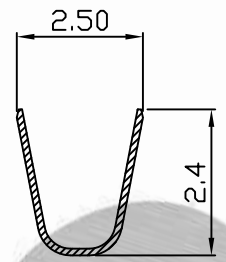
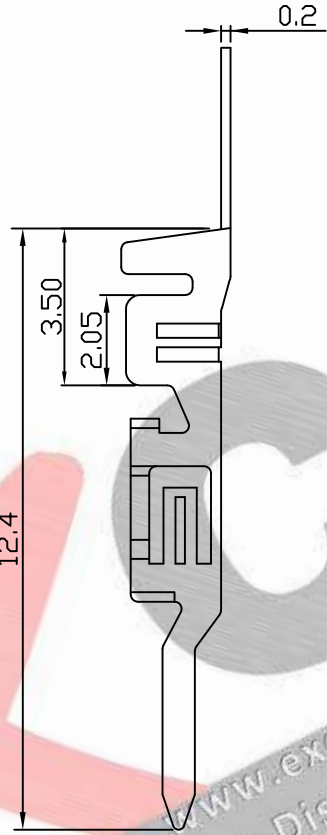
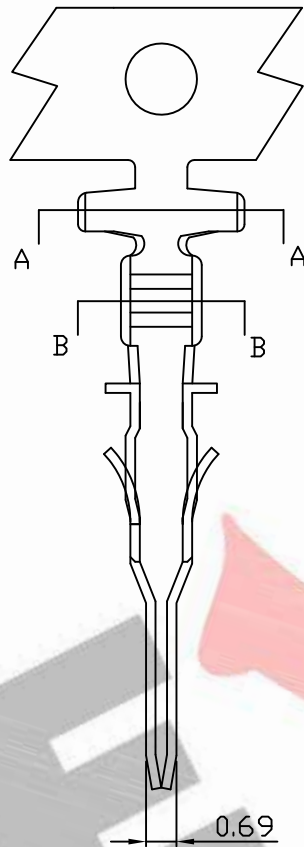
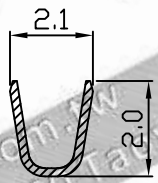


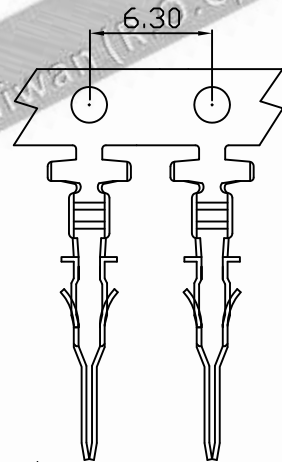
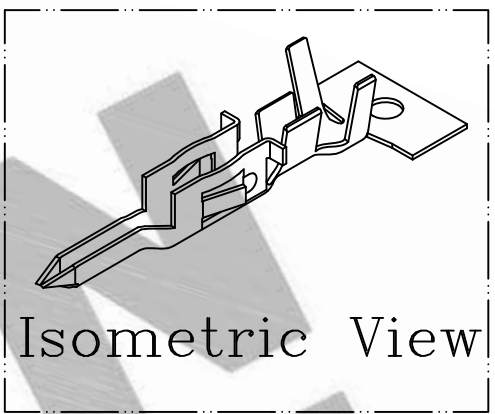
PART NO. 300200TA051  
 DWG NO. C3002TA



SEC A-A



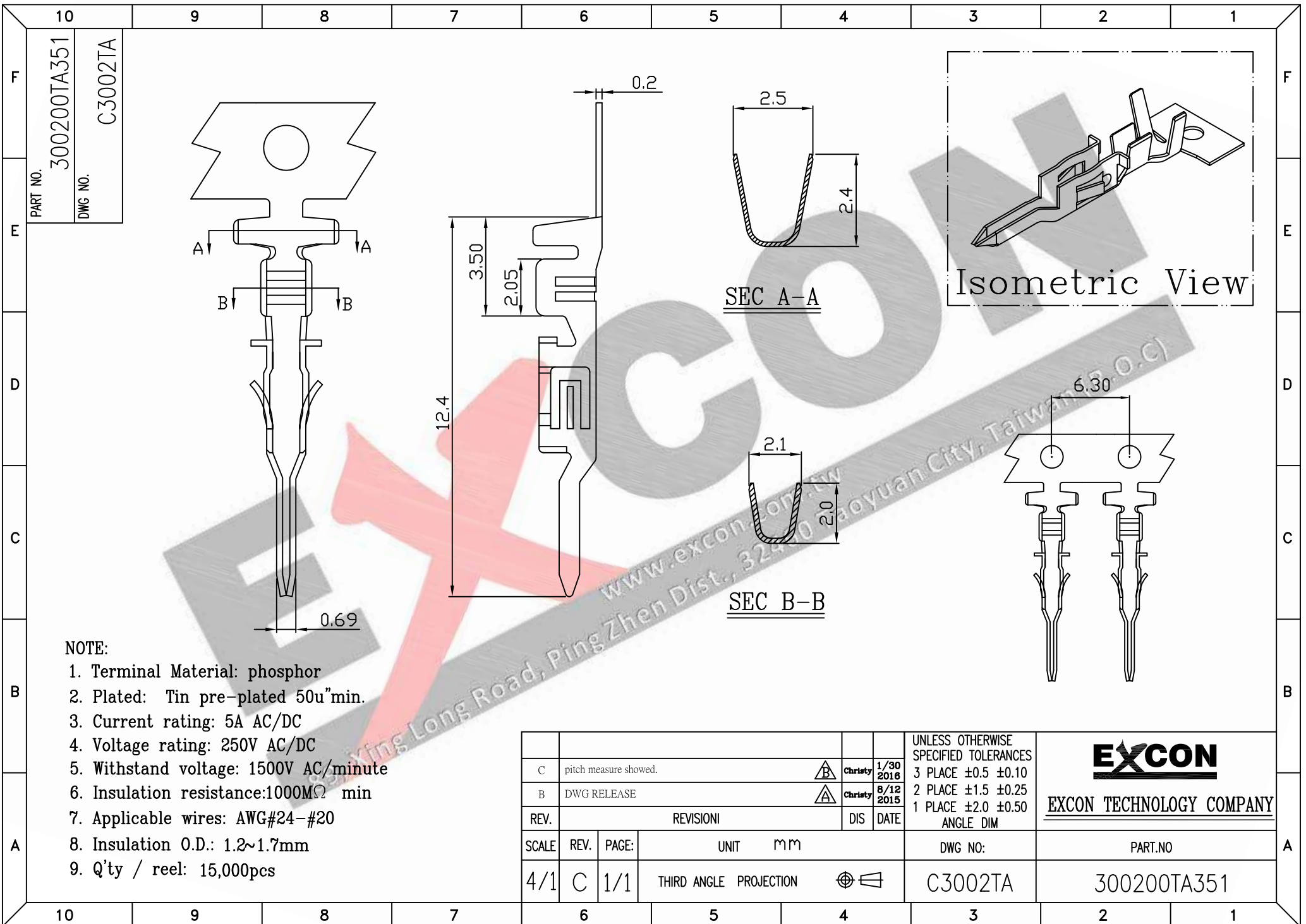
SEC B-B



NOTE:

1. Terminal Material: Brass
2. Plated: Tin pre-plated 50u"min.
3. Current rating: 5A AC/DC
4. Voltage rating: 250V AC/DC
5. Withstand voltage: 1500V AC/minute
6. Insulation resistance: 1000MΩ min
7. Applicable wires: AWG#24-#20
8. Insulation O.D.: 1.2~1.7mm
9. Q'ty / reel: 15,000pcs

B		pitch measure showed.		△	Christy	1/30 2016	UNLESS OTHERWISE SPECIFIED TOLERANCES 3 PLACE ±0.5 ±0.10 2 PLACE ±1.5 ±0.25 1 PLACE ±2.0 ±0.50 ANGLE DIM	<b>EXCON</b> EXCON TECHNOLOGY COMPANY
A		DWG RELEASE			Christy	5/27 2015		
REV.	REVISION			DIS	DATE			
SCALE	REV.	PAGE:	UNIT		mm		DWG NO:	PART.NO
4/1	B	1/1	THIRD ANGLE PROJECTION				C3002TA	300200TA051

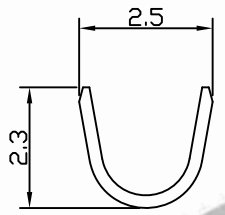
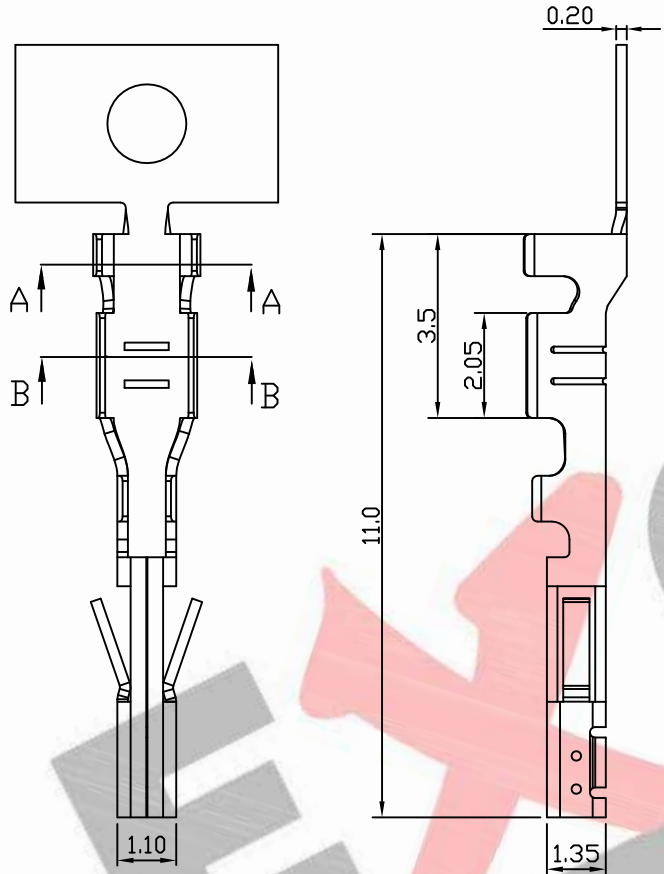


PART NO. 300200TA351  
 DWG NO. C3002TA

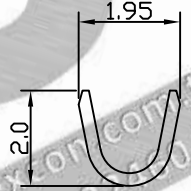
- NOTE:
1. Terminal Material: phosphor
  2. Plated: Tin pre-plated 50u"min.
  3. Current rating: 5A AC/DC
  4. Voltage rating: 250V AC/DC
  5. Withstand voltage: 1500V AC/minute
  6. Insulation resistance: 1000MΩ min
  7. Applicable wires: AWG#24-#20
  8. Insulation O.D.: 1.2~1.7mm
  9. Q'ty / reel: 15,000pcs

C		pitch measure showed.		△	Christy	1/30 2016	UNLESS OTHERWISE SPECIFIED TOLERANCES 3 PLACE ±0.5 ±0.10 2 PLACE ±1.5 ±0.25 1 PLACE ±2.0 ±0.50 ANGLE DIM	 <b>EXCON TECHNOLOGY COMPANY</b>
B		DWG RELEASE		△	Christy	8/12 2015		
REV.	REVISION				DIS	DATE		
SCALE	REV.	PAGE:	UNIT		mm	DWG NO:		PART.NO
4/1	C	1/1	THIRD ANGLE PROJECTION			C3002TA		300200TA351

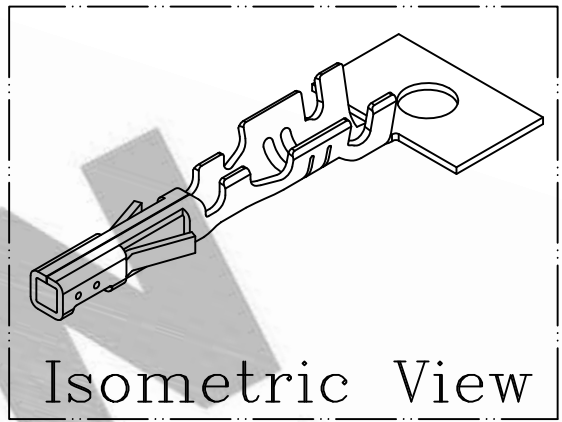
PART NO. 300200TB051  
 DWG NO. C3002TB



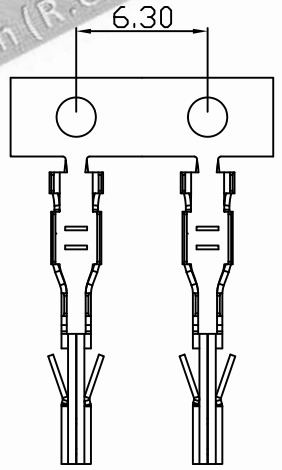
SEC A-A



SEC B-B



Isometric View

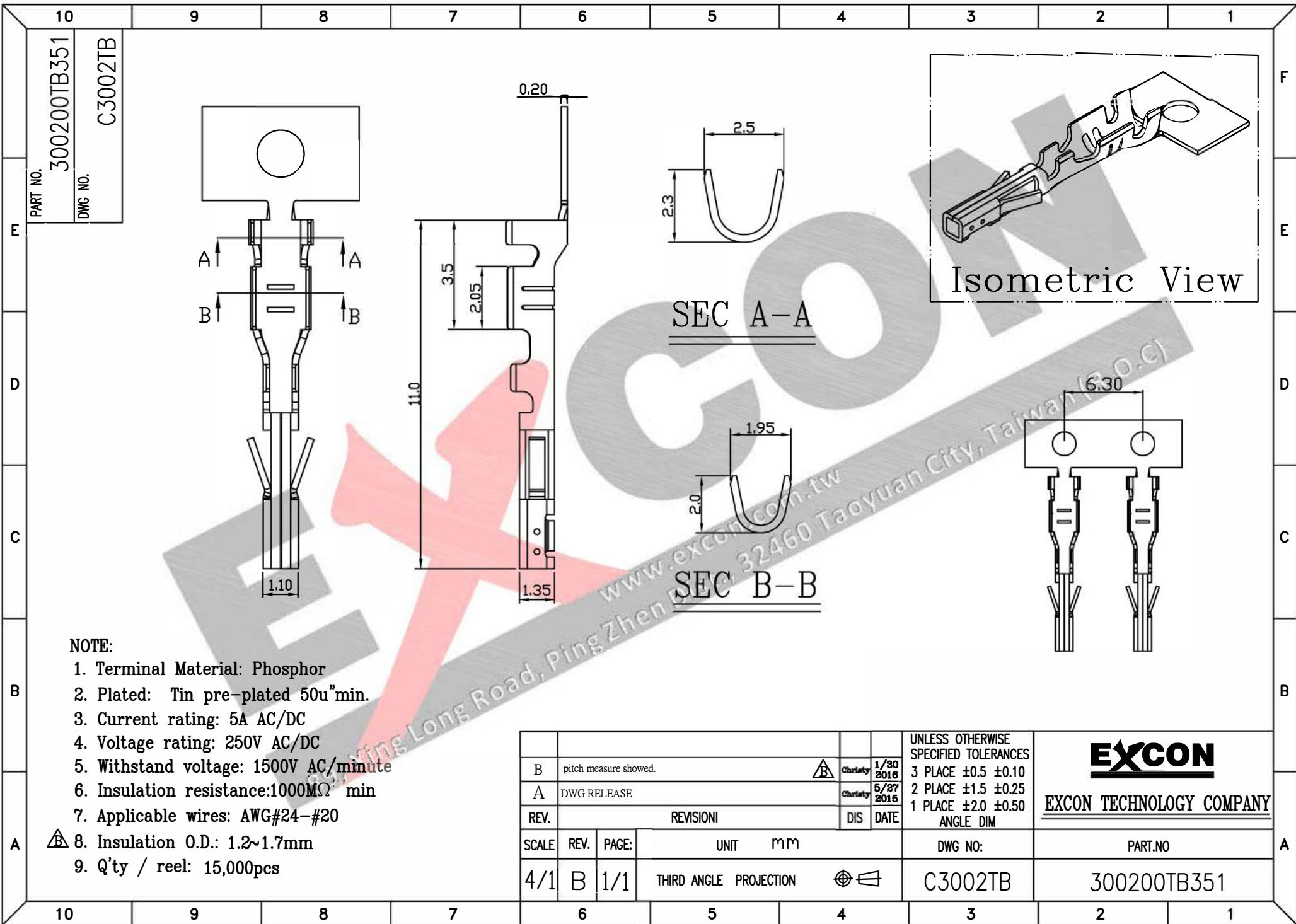


- NOTE:
1. Terminal Material: Brass
  2. Plated: Tin pre-plated 50u"min.
  3. Current rating: 5A AC/DC
  4. Voltage rating: 250V AC/DC
  5. Withstand voltage: 1500V AC/minute
  6. Insulation resistance: 1000MΩ min
  7. Applicable wires: AWG#24-#20
  8. Insulation O.D.: 1.2~1.7mm
  9. Q'ty / reel: 15,000pcs

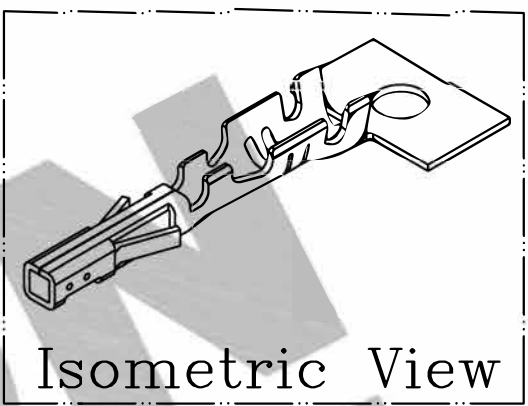
UNLESS OTHERWISE SPECIFIED TOLERANCES			
3 PLACE	±0.5	±0.10	
2 PLACE	±1.5	±0.25	
1 PLACE	±2.0	±0.50	
		ANGLE DIM	
REV.	REVISIONI		DIS DATE
SCALE	REV.	PAGE:	UNIT MM
4/1	B	1/1	THIRD ANGLE PROJECTION
DWG NO:		PART.NO	
C3002TB		300200TB051	

**EXCON**  
 EXCON TECHNOLOGY COMPANY

www.excon.com.tw  
 89, Xing Long Road, PingZhen Dist., 32000 Taoyuan City, Taiwan (R.O.C)



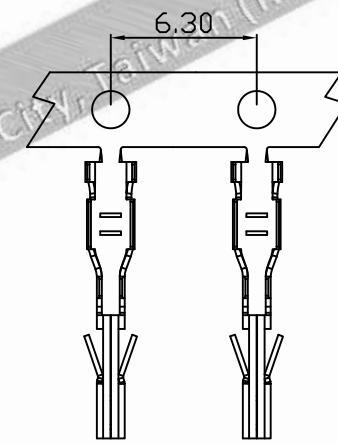
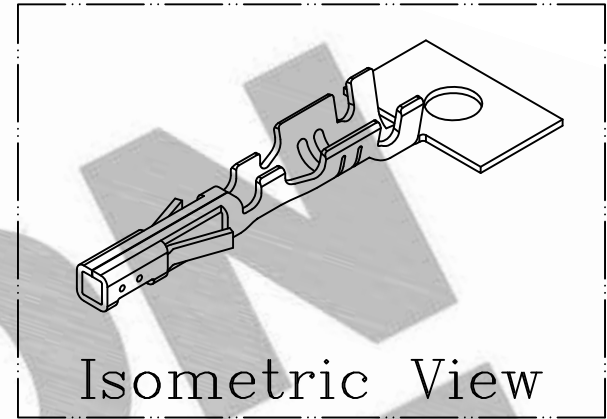
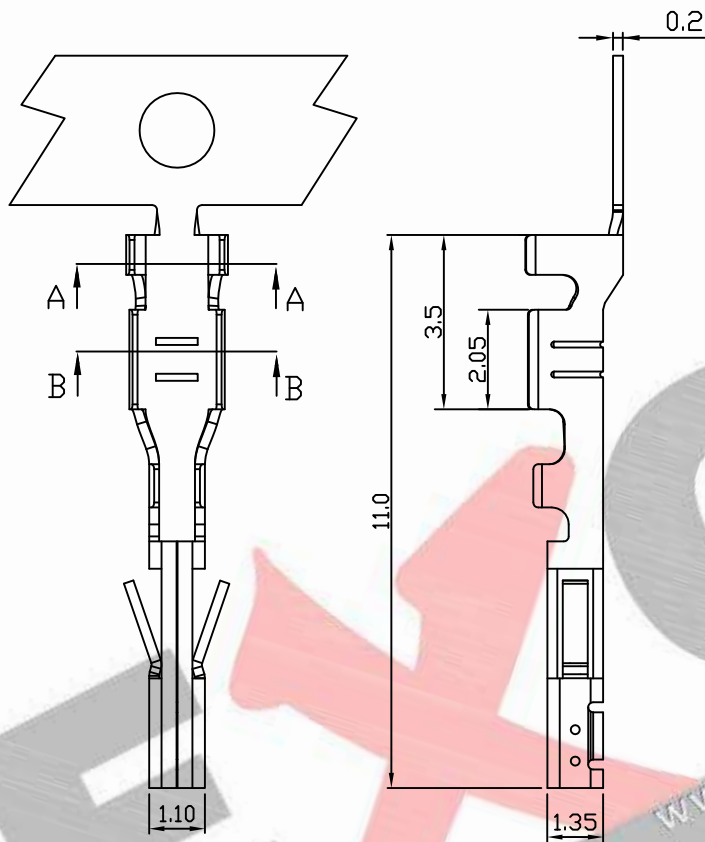
PART NO. 300200TB351  
 DWG NO. C3002TB



- NOTE:
1. Terminal Material: Phosphor
  2. Plated: Tin pre-plated 50u"min.
  3. Current rating: 5A AC/DC
  4. Voltage rating: 250V AC/DC
  5. Withstand voltage: 1500V AC/minute
  6. Insulation resistance: 1000MΩ min
  7. Applicable wires: AWG#24-#20
  8. Insulation O.D.: 1.2~1.7mm
  9. Q'ty / reel: 15,000pcs

B		pitch measure showed.		Charity 1/30 2016		UNLESS OTHERWISE SPECIFIED TOLERANCES 3 PLACE ±0.5 ±0.10 2 PLACE ±1.5 ±0.25 1 PLACE ±2.0 ±0.50 ANGLE DIM	 <b>EXCON TECHNOLOGY COMPANY</b>
A		DWG RELEASE		Charity 5/27 2015			
REV.	REVISION			DIS	DATE		
SCALE	REV.	PAGE:	UNIT	mm		DWG NO:	PART.NO
4/1	B	1/1	THIRD ANGLE	PROJECTION		C3002TB	300200TB351

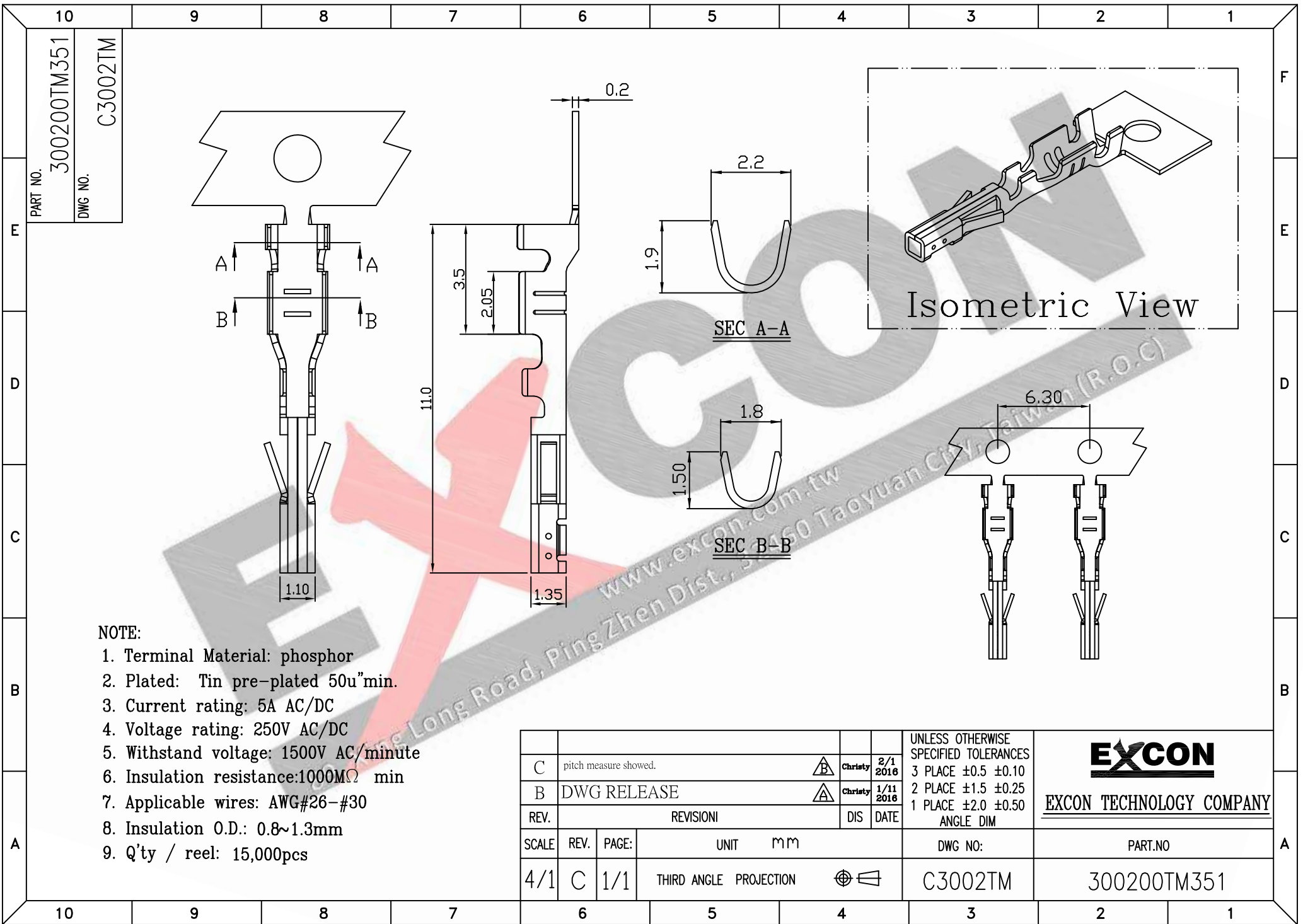
PART NO. 300200TM051  
 DWG NO. C3002TM



NOTE:

1. Terminal Material: Brass
2. Plated: Tin pre-plated 50u"min.
3. Current rating: 5A AC/DC
4. Voltage rating: 250V AC/DC
5. Withstand voltage: 1500V AC/minute
6. Insulation resistance: 1000MΩ min
7. Applicable wires: AWG#26-#30
8. Insulation O.D.: 0.8~1.3mm
9. Q'ty / reel: 15,000pcs

				UNLESS OTHERWISE SPECIFIED TOLERANCES		<b>EXCON</b> EXCON TECHNOLOGY COMPANY
				3 PLACE ±0.5 ±0.10 2 PLACE ±1.5 ±0.25 1 PLACE ±2.0 ±0.50 ANGLE DIM		
A	DWG RELEASE			△	Christy 2/1 2016	
REV.	REVISION			DIS	DATE	
SCALE	REV.	PAGE:	UNIT	mm		DWG NO:
4/1	A	1/1	THIRD ANGLE PROJECTION			C3002TM
					PART.NO	
					300200TM051	



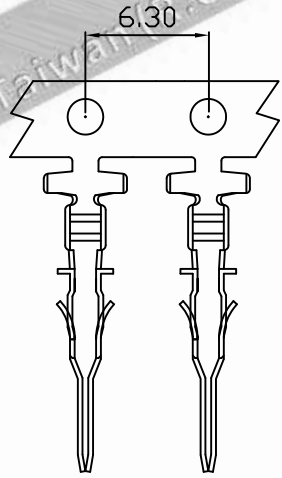
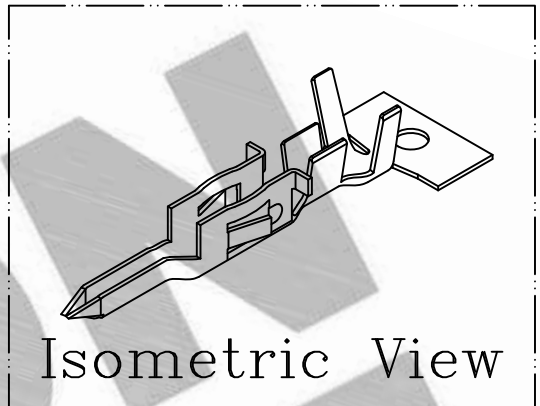
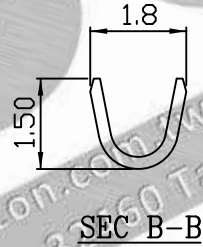
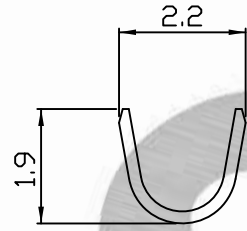
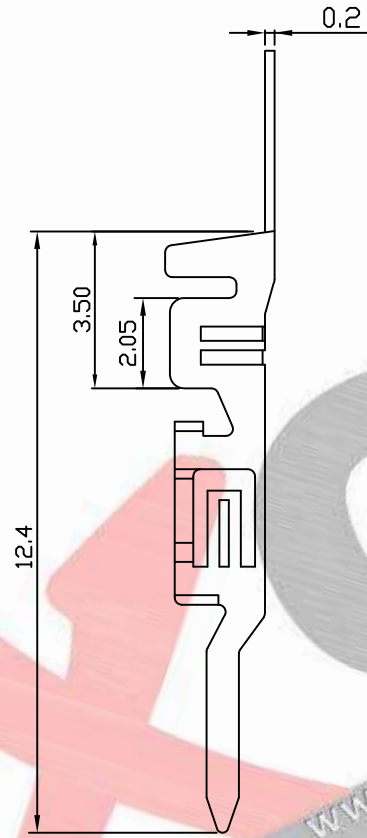
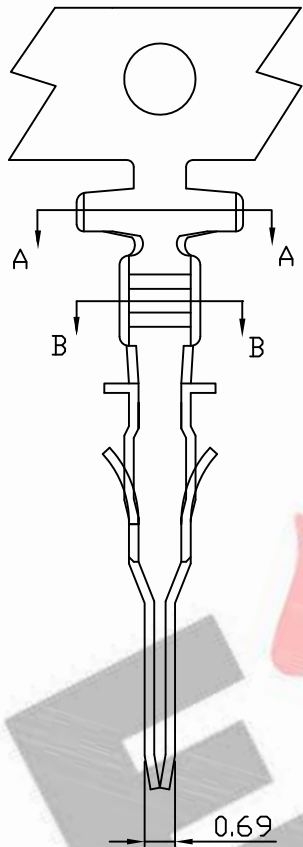
PART NO. 300200TM351  
 DWG NO. C3002TM

**NOTE:**

1. Terminal Material: phosphor
2. Plated: Tin pre-plated 50u"min.
3. Current rating: 5A AC/DC
4. Voltage rating: 250V AC/DC
5. Withstand voltage: 1500V AC/minute
6. Insulation resistance: 1000MΩ min
7. Applicable wires: AWG#26-#30
8. Insulation O.D.: 0.8~1.3mm
9. Q'ty / reel: 15,000pcs

C		pitch measure showed.		△	Christy	2/1 2016	UNLESS OTHERWISE SPECIFIED TOLERANCES 3 PLACE ±0.5 ±0.10 2 PLACE ±1.5 ±0.25 1 PLACE ±2.0 ±0.50 ANGLE DIM	<b>EXCON</b> EXCON TECHNOLOGY COMPANY
B		DWG RELEASE		△	Christy	1/11 2016		
REV.	REVISION				DIS	DATE		
SCALE	REV.	PAGE:	UNIT		mm	DWG NO:		PART.NO
4/1	C	1/1	THIRD ANGLE PROJECTION		⊕	C3002TM	300200TM351	

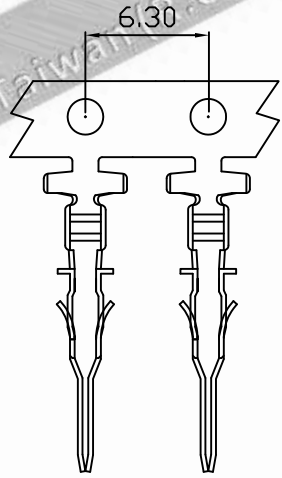
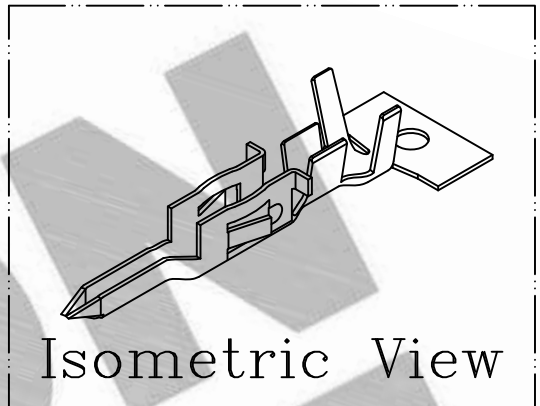
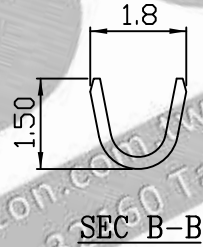
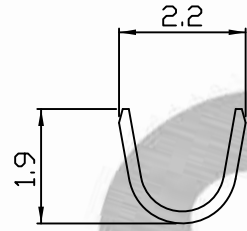
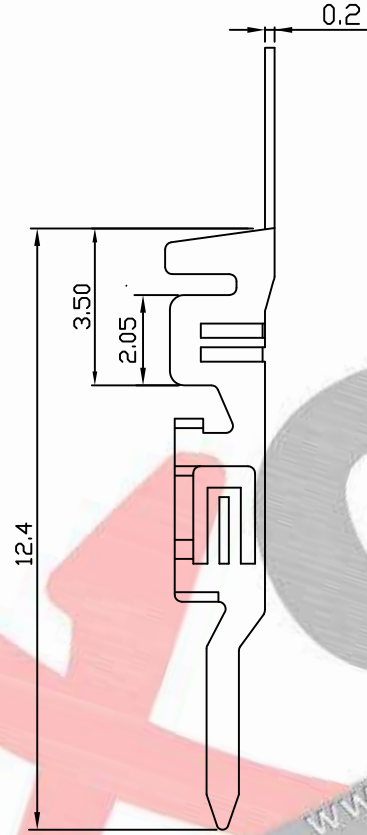
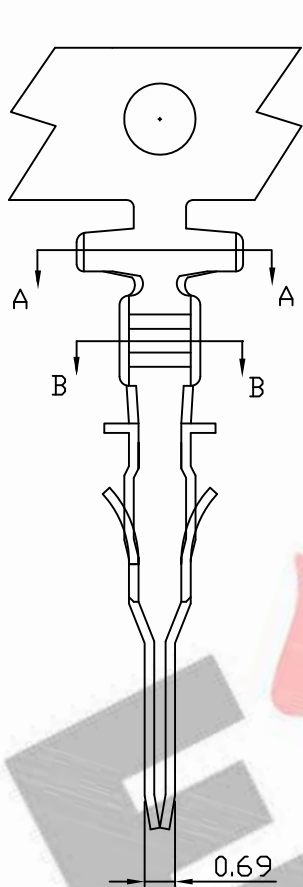
PART NO. 300200TP051  
 DWG NO. C3002TP



- NOTE:
1. Terminal Material: Brass
  2. Plated: Tin pre-plated 50u"min.
  3. Current rating: 5A AC/DC
  4. Voltage rating: 250V AC/DC
  5. Withstand voltage: 1500V AC/minute
  6. Insulation resistance: 1000MΩ min
  7. Applicable wires: AWG#26-#30
  8. Insulation O.D.: 0.8~1.3mm
  9. Q'ty / reel: 15,000pcs

				UNLESS OTHERWISE SPECIFIED TOLERANCES		<b>EXCON</b>
				3 PLACE ±0.5 ±0.10		
A DWG RELEASE				Christy	1/30	2 PLACE ±1.5 ±0.25
REV. REVISION				DIS	DATE	1 PLACE ±2.0 ±0.50
SCALE REV. PAGE: UNIT mm				DWG NO:		PART.NO
4/1 A 1/1 THIRD ANGLE PROJECTION				C3002TP		300200TP051

PART NO. 300200TP351  
 DWG NO. C3002TP



- NOTE:
1. Terminal Material: phosphor
  2. Plated: Tin pre-plated 50u"min.
  3. Current rating: 5A AC/DC
  4. Voltage rating: 250V AC/DC
  5. Withstand voltage: 1500V AC/minute
  6. Insulation resistance: 1000MΩ min
  7. Applicable wires: AWG#26-#30
  8. Insulation O.D.: 0.8~1.3mm
  9. Q'ty / reel: 15,000pcs

UNLESS OTHERWISE SPECIFIED TOLERANCES		 <b>EXCON TECHNOLOGY COMPANY</b>	
3 PLACE ±0.5 ±0.10 2 PLACE ±1.5 ±0.25 1 PLACE ±2.0 ±0.50 ANGLE DIM			
REV.	DWG RELEASE	Christy	1/11 2016
SCALE	REV.	PAGE:	UNIT mm
4/1	B	1/1	THIRD ANGLE PROJECTION
DWG NO:		PART.NO	
C3002TP		300200TP351	