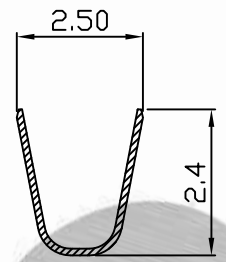
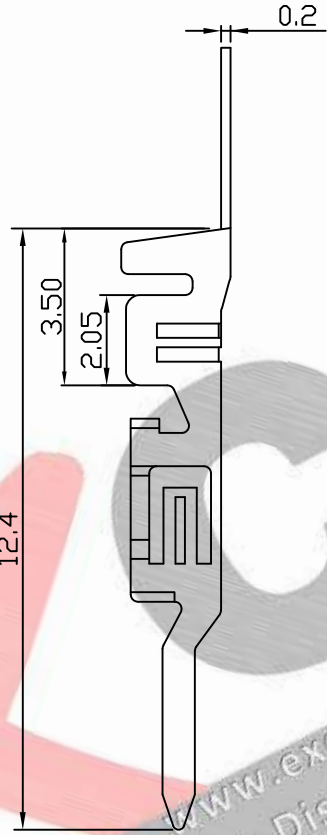
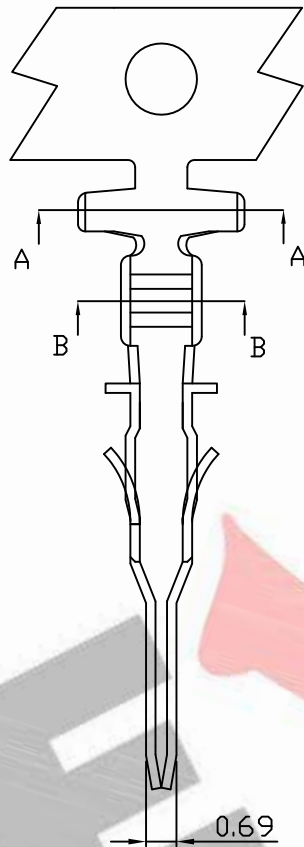
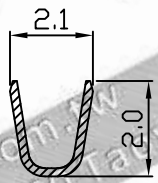


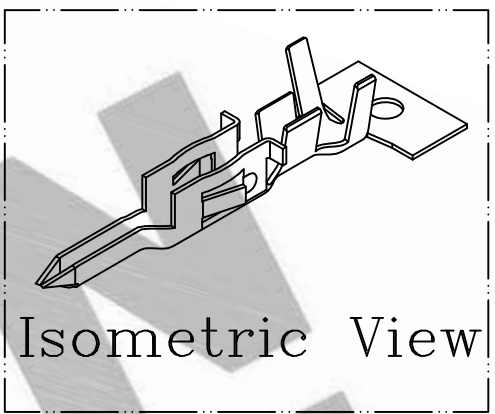
PART NO. 300100TA051  
 DWG NO. C3001TA



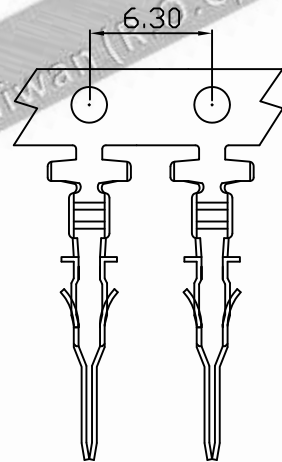
SEC A-A



SEC B-B



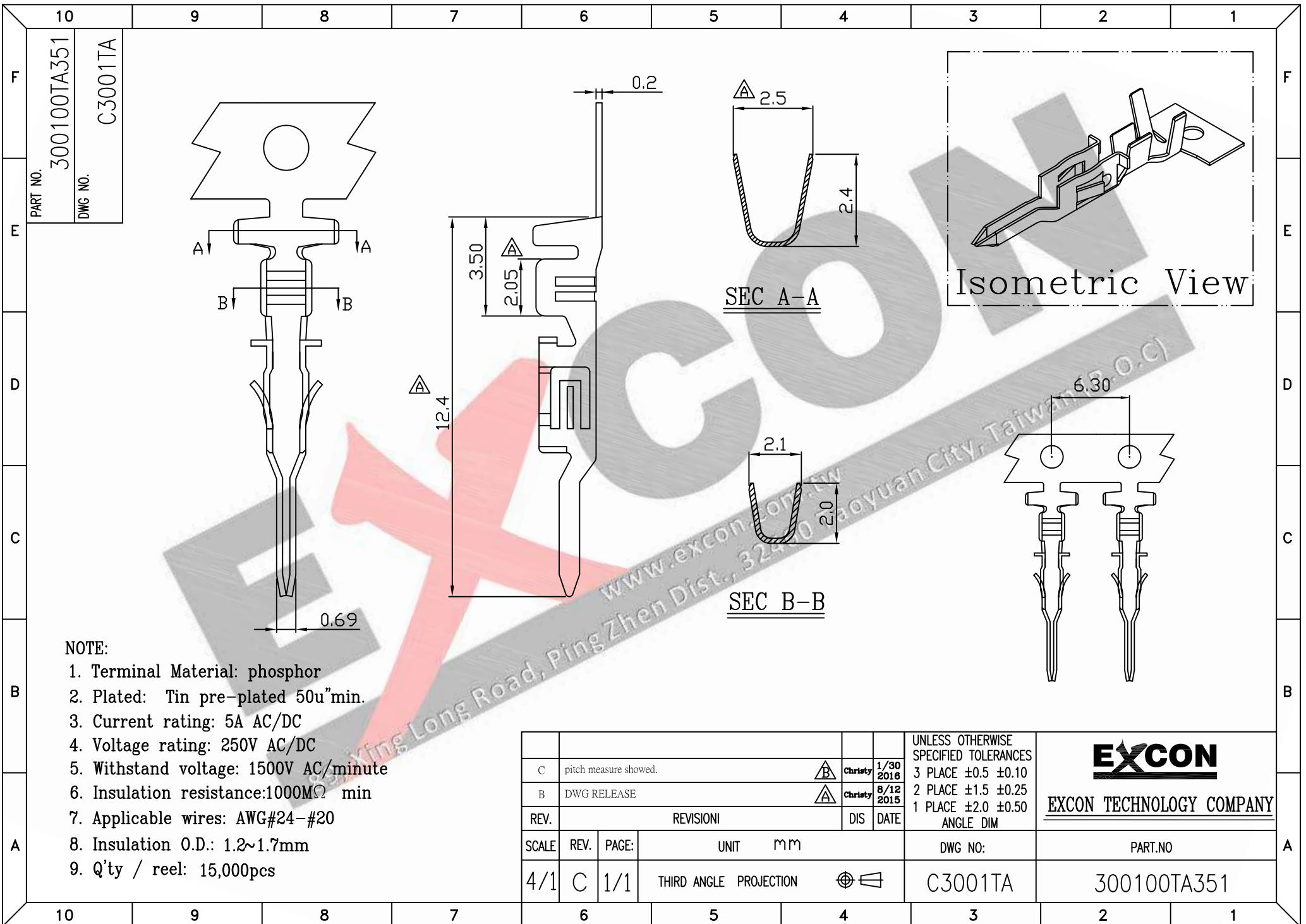
Isometric View



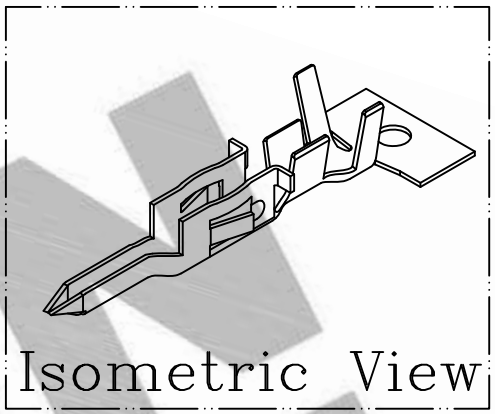
NOTE:

1. Terminal Material: Brass
2. Plated: Tin pre-plated 50u"min.
3. Current rating: 5A AC/DC
4. Voltage rating: 250V AC/DC
5. Withstand voltage: 1500V AC/minute
6. Insulation resistance: 1000MΩ min
7. Applicable wires: AWG#24-#20
8. Insulation O.D.: 1.2~1.7mm
9. Q'ty / reel: 15,000pcs

B		pitch measure showed.		△ B		Christy 1/30 2016		UNLESS OTHERWISE SPECIFIED TOLERANCES 3 PLACE ±0.5 ±0.10 2 PLACE ±1.5 ±0.25 1 PLACE ±2.0 ±0.50 ANGLE DIM		 <b>EXCON TECHNOLOGY COMPANY</b>		
A		DWG RELEASE				Christy 5/27 2015						
REV.	REVISION						DIS	DATE				
SCALE	REV.	PAGE:	UNIT		mm		DWG NO:		PART.NO			
4/1	B	1/1	THIRD ANGLE PROJECTION				C3001TA		300100TA051			

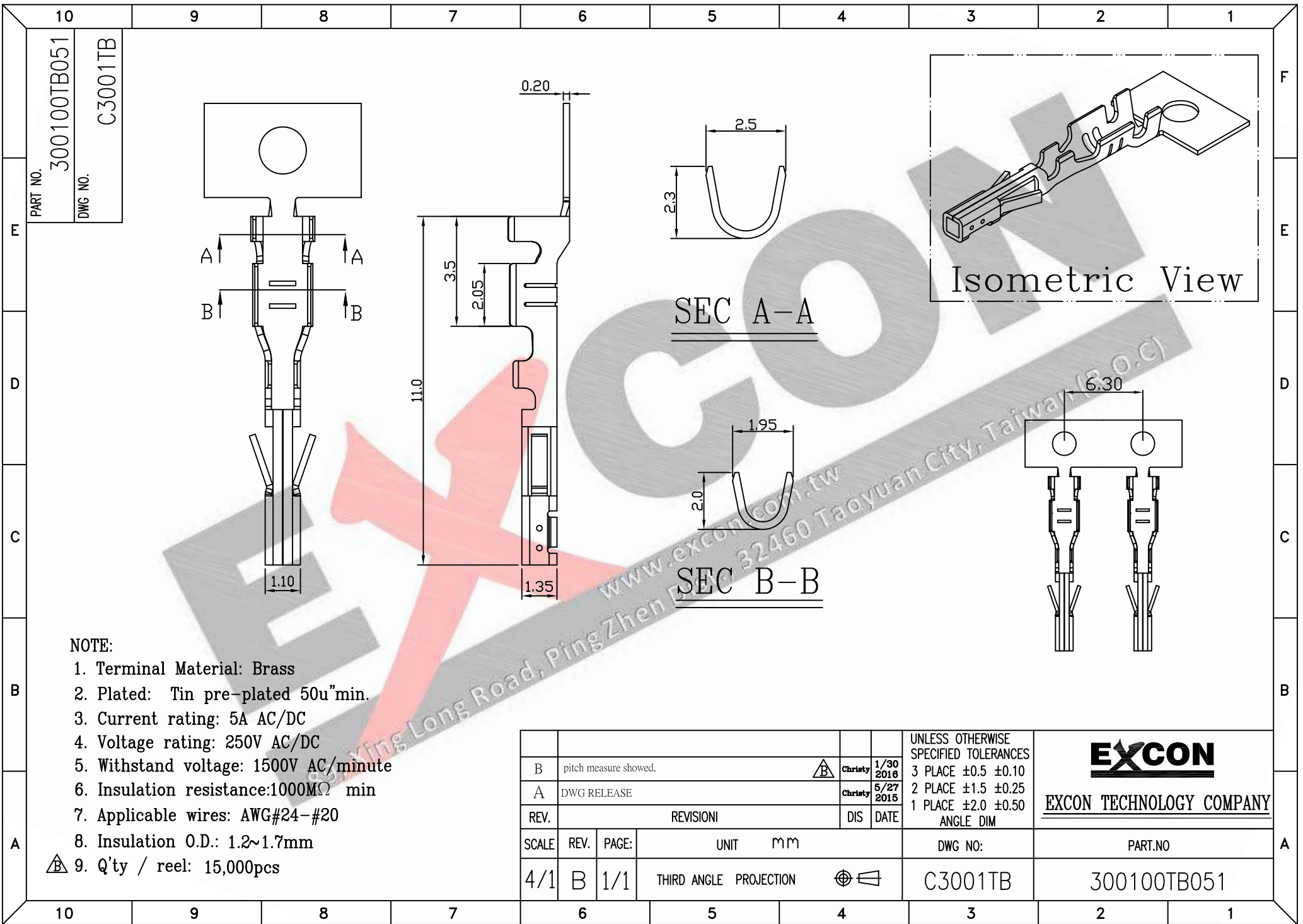


PART NO. 300100TA351  
 DWG NO. C3001TA

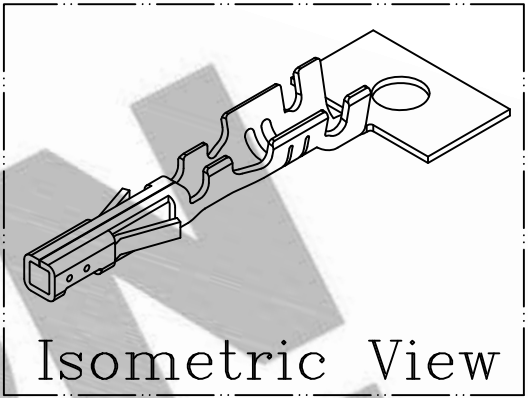


- NOTE:
1. Terminal Material: phosphor
  2. Plated: Tin pre-plated 50u"min.
  3. Current rating: 5A AC/DC
  4. Voltage rating: 250V AC/DC
  5. Withstand voltage: 1500V AC/minute
  6. Insulation resistance: 1000MΩ min
  7. Applicable wires: AWG#24-#20
  8. Insulation O.D.: 1.2~1.7mm
  9. Q'ty / reel: 15,000pcs

C		pitch measure showed.		△	Christy	1/30 2016	UNLESS OTHERWISE SPECIFIED TOLERANCES 3 PLACE ±0.5 ±0.10 2 PLACE ±1.5 ±0.25 1 PLACE ±2.0 ±0.50 ANGLE DIM	 <b>EXCON TECHNOLOGY COMPANY</b>
B		DWG RELEASE		△	Christy	8/12 2015		
REV.	REVISION				DIS	DATE		
SCALE	REV.	PAGE:	UNIT		mm		DWG NO:	PART.NO
4/1	C	1/1	THIRD ANGLE PROJECTION				C3001TA	300100TA351

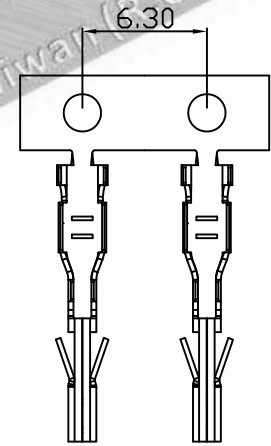


PART NO. 300100TB051  
 DWG NO. C3001TB



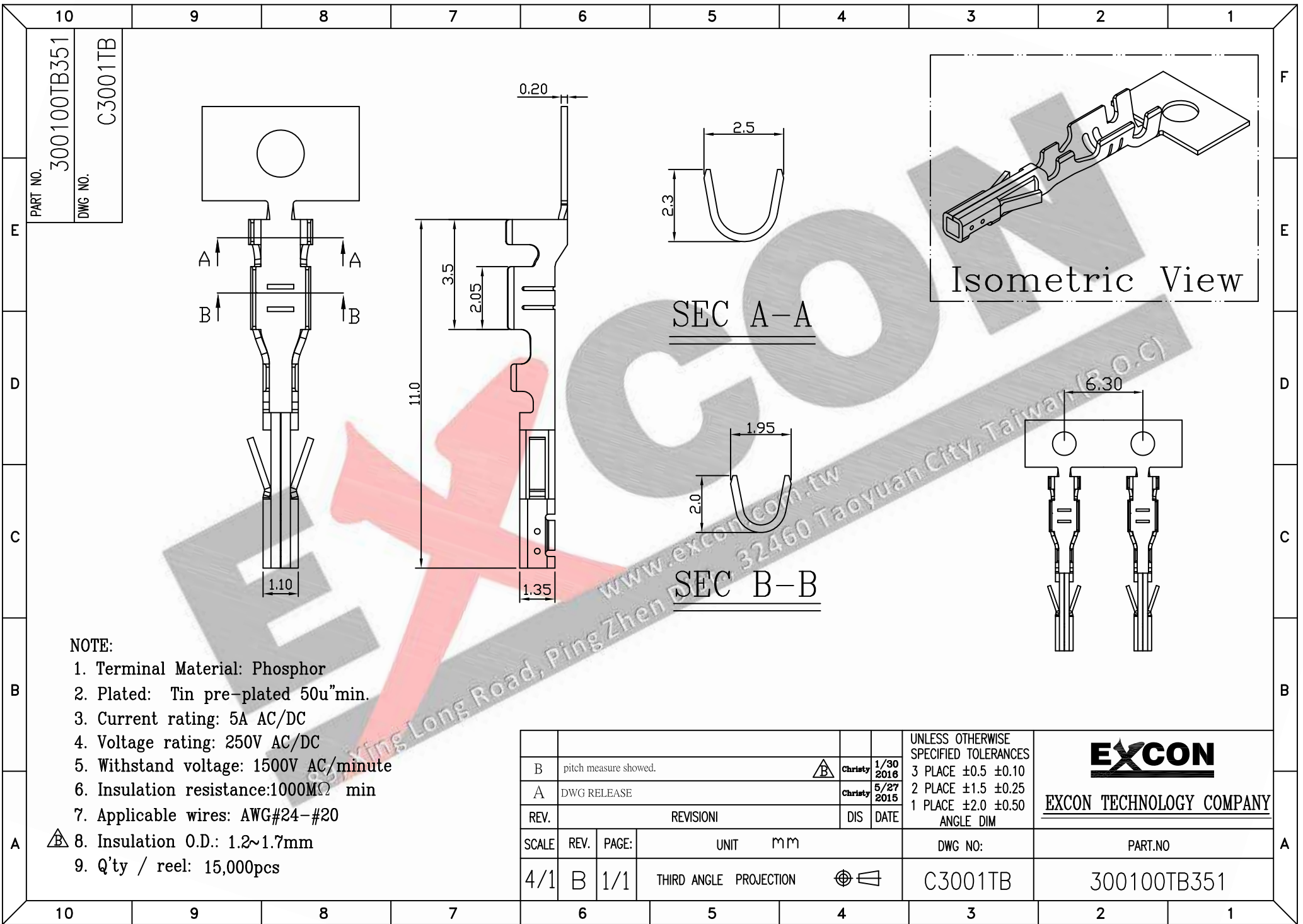
SEC A-A

SEC B-B

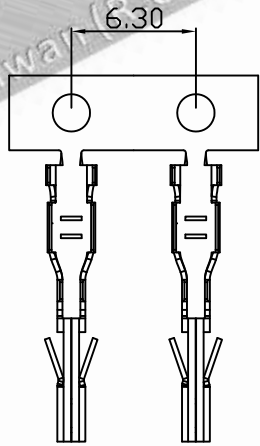
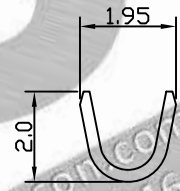
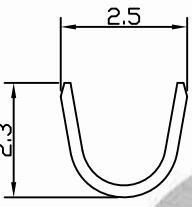
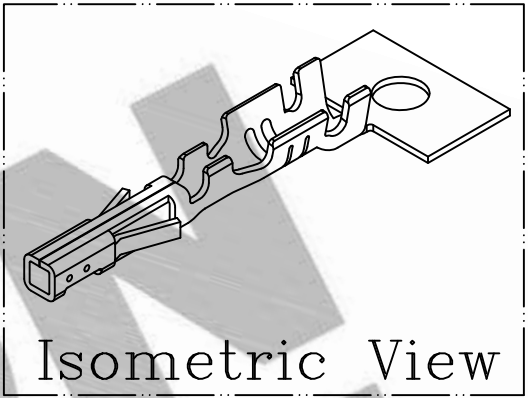


- NOTE:
1. Terminal Material: Brass
  2. Plated: Tin pre-plated 50u"min.
  3. Current rating: 5A AC/DC
  4. Voltage rating: 250V AC/DC
  5. Withstand voltage: 1500V AC/minute
  6. Insulation resistance: 1000MΩ min
  7. Applicable wires: AWG#24-#20
  8. Insulation O.D.: 1.2~1.7mm
  9. Q'ty / reel: 15,000pcs

B		pitch measure showed.		△	Christy	1/30 2016	UNLESS OTHERWISE SPECIFIED TOLERANCES 3 PLACE ±0.5 ±0.10 2 PLACE ±1.5 ±0.25 1 PLACE ±2.0 ±0.50 ANGLE DIM	 <b>EXCON TECHNOLOGY COMPANY</b>
A		DWG RELEASE			Christy	5/27 2015		
REV.	REVISION			DIS	DATE			
SCALE	REV.	PAGE:	UNIT		mm		DWG NO:	PART.NO
4/1	B	1/1	THIRD ANGLE PROJECTION				C3001TB	300100TB051



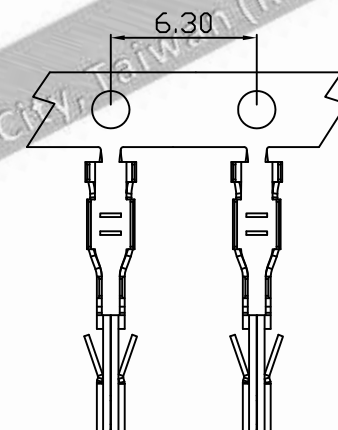
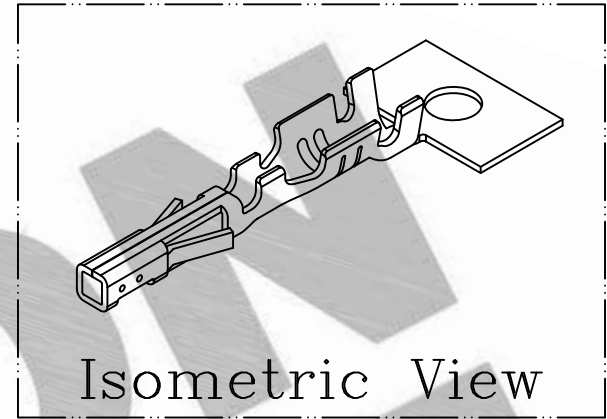
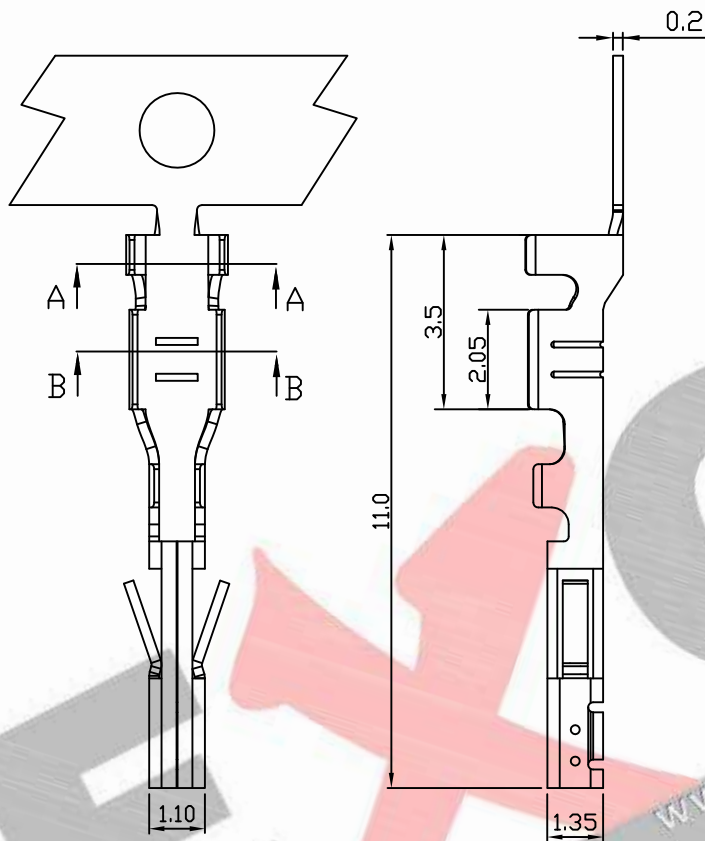
PART NO. 300100TB351  
 DWG NO. C3001TB



- NOTE:
1. Terminal Material: Phosphor
  2. Plated: Tin pre-plated 50u"min.
  3. Current rating: 5A AC/DC
  4. Voltage rating: 250V AC/DC
  5. Withstand voltage: 1500V AC/minute
  6. Insulation resistance: 1000MΩ min
  7. Applicable wires: AWG#24-#20
  8. Insulation O.D.: 1.2~1.7mm
  9. Q'ty / reel: 15,000pcs

B		pitch measure showed.		△ B		Christy 1/30/2016		UNLESS OTHERWISE SPECIFIED TOLERANCES		<b>EXCON</b> EXCON TECHNOLOGY COMPANY		
A		DWG RELEASE				Christy 5/27/2015		3 PLACE ±0.5 ±0.10 2 PLACE ±1.5 ±0.25 1 PLACE ±2.0 ±0.50 ANGLE DIM				
REV.	REVISION						DIS	DATE				
SCALE	REV.	PAGE:	UNIT			mm	DWG NO:		PART.NO			
4/1	B	1/1	THIRD ANGLE PROJECTION					C3001TB	300100TB351			

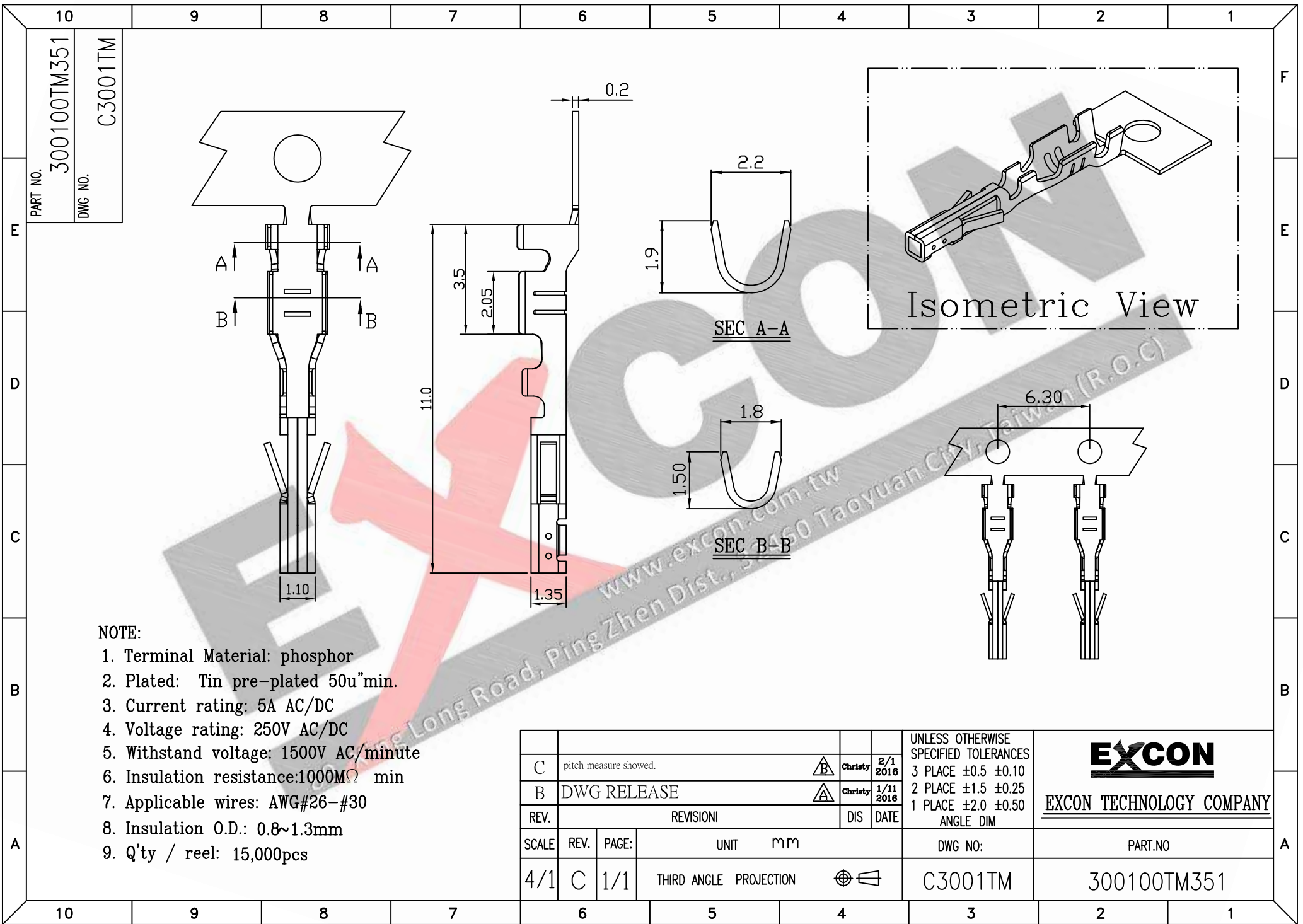
PART NO. 300100TM051  
 DWG NO. C3001TM



NOTE:

1. Terminal Material: Brass
2. Plated: Tin pre-plated 50u"min.
3. Current rating: 5A AC/DC
4. Voltage rating: 250V AC/DC
5. Withstand voltage: 1500V AC/minute
6. Insulation resistance: 1000MΩ min
7. Applicable wires: AWG#26-#30
8. Insulation O.D.: 0.8~1.3mm
9. Q'ty / reel: 15,000pcs

				UNLESS OTHERWISE SPECIFIED TOLERANCES		<b>EXCON</b> EXCON TECHNOLOGY COMPANY
A		DWG RELEASE		3 PLACE ±0.5 ±0.10 2 PLACE ±1.5 ±0.25 1 PLACE ±2.0 ±0.50 ANGLE DIM		
REV.	REVISION			DIS	DATE	
SCALE	REV.	PAGE:	UNIT	mm		DWG NO:
4/1	A	1/1	THIRD ANGLE PROJECTION			C3001TM
					DWG NO:	PART.NO
					C3001TM	300100TM051

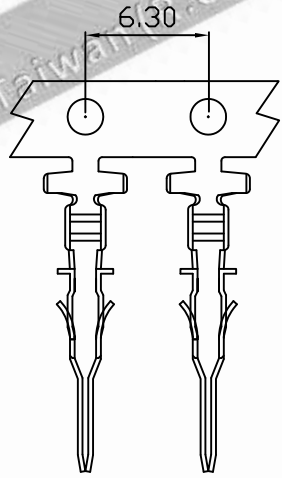
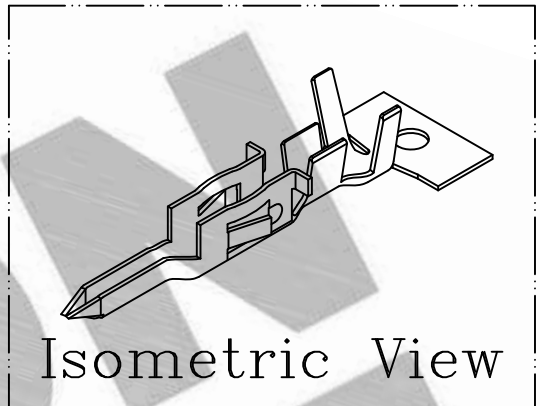
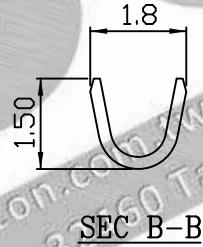
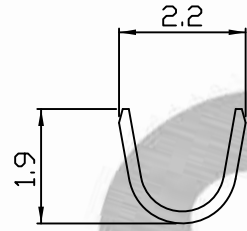
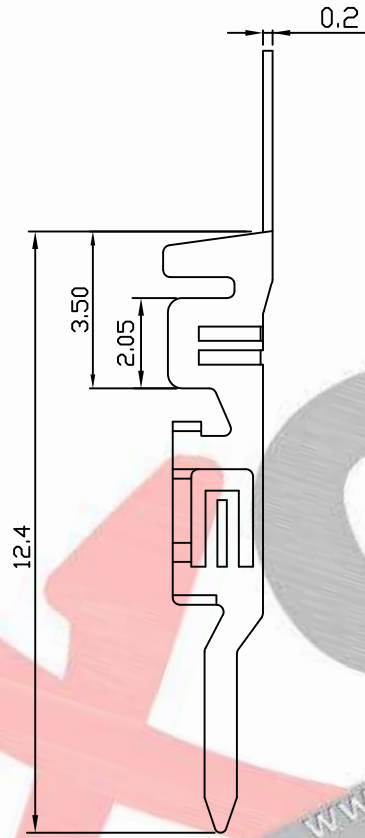
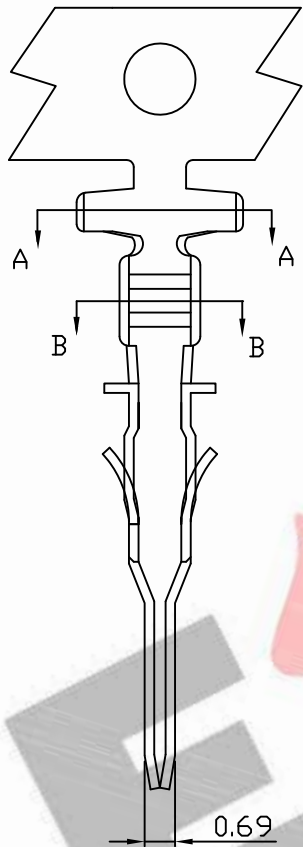


PART NO. 300100TM351  
 DWG NO. C3001TM

- NOTE:
1. Terminal Material: phosphor
  2. Plated: Tin pre-plated 50u"min.
  3. Current rating: 5A AC/DC
  4. Voltage rating: 250V AC/DC
  5. Withstand voltage: 1500V AC/minute
  6. Insulation resistance: 1000MΩ min
  7. Applicable wires: AWG#26-#30
  8. Insulation O.D.: 0.8~1.3mm
  9. Q'ty / reel: 15,000pcs

C		pitch measure showed.		△	Christy	2/1 2016	UNLESS OTHERWISE SPECIFIED TOLERANCES 3 PLACE ±0.5 ±0.10 2 PLACE ±1.5 ±0.25 1 PLACE ±2.0 ±0.50 ANGLE DIM	 <b>EXCON TECHNOLOGY COMPANY</b>
B		DWG RELEASE		△	Christy	1/11 2016		
REV.	REVISION			DIS	DATE			
SCALE	REV.	PAGE:	UNIT mm		DWG NO:		PART.NO	
4/1	C	1/1	THIRD ANGLE PROJECTION		C3001TM		300100TM351	

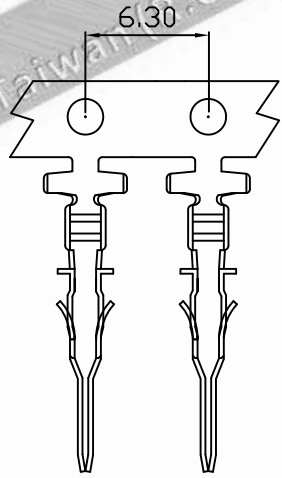
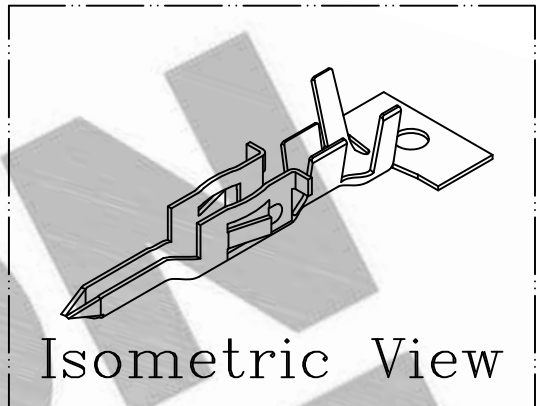
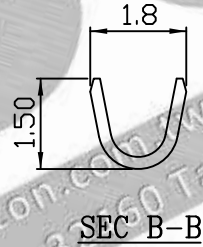
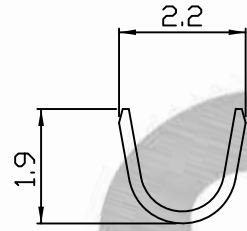
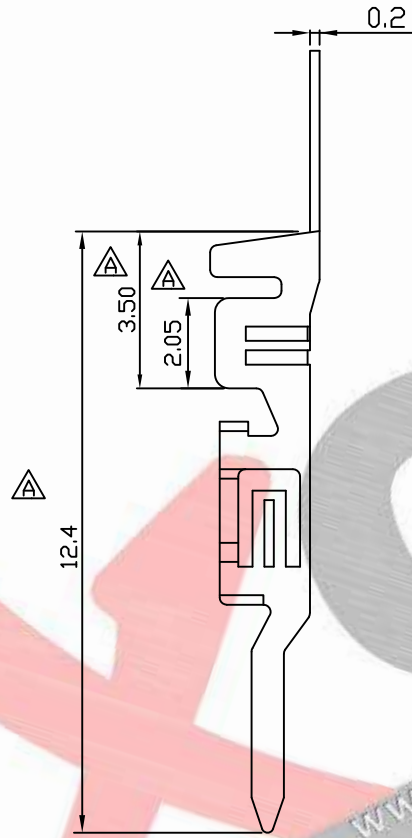
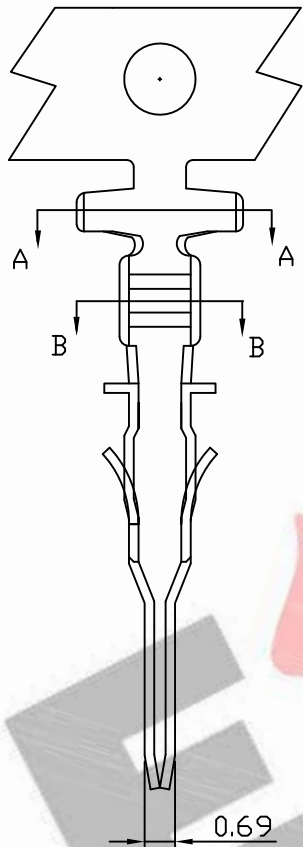
PART NO. 300100TP051  
 DWG NO. C3001TP



- NOTE:
1. Terminal Material: Brass
  2. Plated: Tin pre-plated 50u"min.
  3. Current rating: 5A AC/DC
  4. Voltage rating: 250V AC/DC
  5. Withstand voltage: 1500V AC/minute
  6. Insulation resistance: 1000MΩ min
  7. Applicable wires: AWG#26-#30
  8. Insulation O.D.: 0.8~1.3mm
  9. Q'ty / reel: 15,000pcs

UNLESS OTHERWISE SPECIFIED TOLERANCES		 <b>EXCON TECHNOLOGY COMPANY</b>	
3 PLACE ±0.5 ±0.10			
2 PLACE ±1.5 ±0.25		PART.NO	
1 PLACE ±2.0 ±0.50		300100TP051	
ANGLE DIM		DWG NO:	
		C3001TP	
REV.	REVISION	DIS	DATE
A	DWG RELEASE	Christy	1/30/2016
SCALE	REV.	PAGE:	UNIT mm
4/1	A	1/1	THIRD ANGLE PROJECTION

PART NO. 300100TP351  
 DWG NO. C3001TP



- NOTE:
1. Terminal Material: phosphor
  2. Plated: Tin pre-plated 50u"min.
  3. Current rating: 5A AC/DC
  4. Voltage rating: 250V AC/DC
  5. Withstand voltage: 1500V AC/minute
  6. Insulation resistance: 1000MΩ min
  7. Applicable wires: AWG#26-#30
  8. Insulation O.D.: 0.8~1.3mm
  9. Q'ty / reel: 15,000pcs

				UNLESS OTHERWISE SPECIFIED TOLERANCES		<b>EXCON</b>
				3 PLACE ±0.5 ±0.10		
B DWG RELEASE				Christy	1/11	PART.NO
				2016		
REV.	REVISION			DIS	DATE	
SCALE	REV.	PAGE:	UNIT	mm		DWG NO:
4/1	B	1/1	THIRD ANGLE PROJECTION			C3001TP

