

FEMALE HEADER DIP SINGLE ROW Y-TYPE

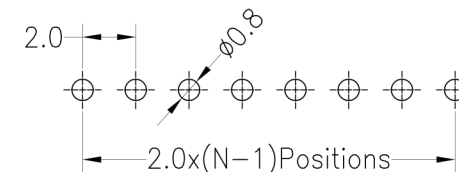
23 SERIES - 2.00MM PITCH



Specifications

- Rated Current: 1.5AMP
- Contact Resistance: 20mΩ Max
- Withstand Resistance: 500V AC/DC
- Insulation Resistance: 1000MΩ Min
- Operation Temperature: -40°C to +105°C
- Contact Material: Brass
- Contact Plating : Au Or Sn Over Ni
- Insulator Material : Polyester (UL94V-0)
- Standard : PA6T
- Max. Processing Temp : 230° for 30-60 seconds
260° for 10 seconds

Recommended P.C.B Layout(Top Side)
(PCB BOARD TOLERANCE±0.05)



Ordering Information

2363D - 1 Y (XX) - A B C (1) 01*

1. Connector Series

2. (H) Hauteur isolant

- H = 63 (Hauteur isolant : 6.35mm)

3. Y-Type

4. Number of pins per row

5. Insulator Material Option

- A = BK-PBT
- B = BK-PA66
- C = BK-PA6T
- D =BK-PA46
- E =BK-LCP

6. Contact Plating

- A = 1U" Gold
- B = 1.5U" Gold
- C = 2U" Gold
- D = 3U" Gold
- E = 5U" Gold
- F= Gold Flash/Tin
- G= Tin

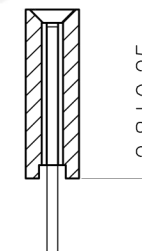
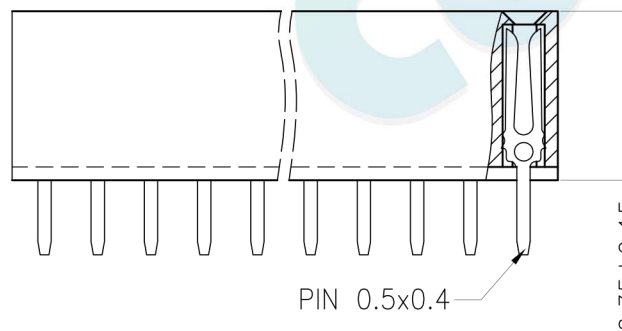
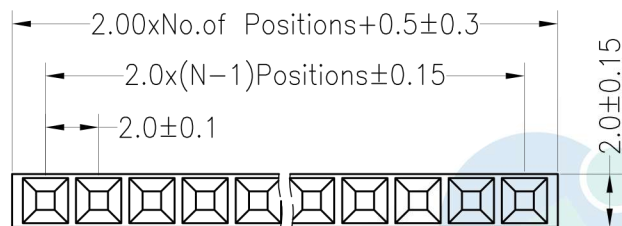
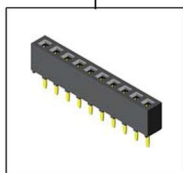
7. Post


- W (With Post)
- Ø (No Post)

(01)* = Type 1

(1). Packaging

Ø=PE Bag 1=Tray 2=Tube 3=Tube+Cap 4=Reel+Cap 5=Reel+Mylar



				OPERATION		DRAW	BEN	12.04.18	SCALE	FIT	 votre partenaire en électronique	
				X.X	±0.30				UNIT	mm		
				X.XX	±0.20	CHECK			SIZE	A4	PART NO.	2363D - 1YXX - XXX 01
				X.XXX	±0.10				SHEET	1/1	TITLE:	2.00PF H6.35mm 1xNpin 180°
REV	DATE	MODIFICATION DESCRIPTION	CHANGE	DIM	TOL	APPROVE			PROJ.	◆		

FEMALE HEADER DIP SINGLE ROW Y-TYPE

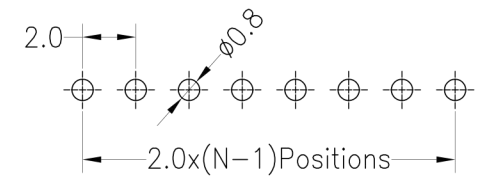
23 SERIES - 2.00MM PITCH



Specifications

- Rated Current: 1.5AMP
- Contact Resistance: 20mΩ Max
- Withstand Resistance: 500V AC/DC
- Insulation Resistance: 1000MΩ Min
- Operation Temperature: -40°C to +105°C
- Contact Material: Brass
- Contact Plating : Au Or Sn Over Ni
- Insulator Material : Polyester (UL94V-0)
- Standard : PA6T
- Max. Processing Temp : 230° for 30-60 seconds
260° for 10 seconds

Recommended P.C.B Layout(Top Side)
(PCB BOARD TOLERANCE±0.05)

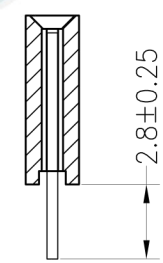
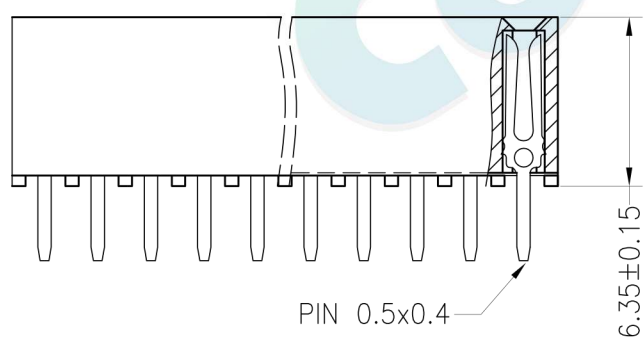
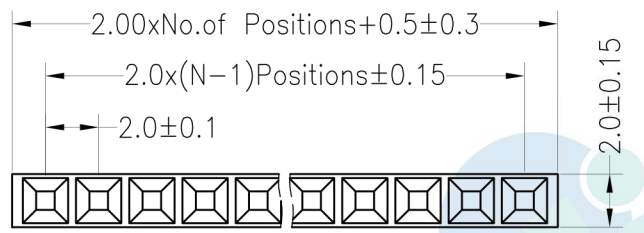
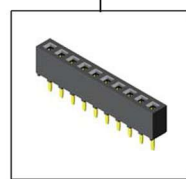


Ordering Information

2363D - 1 Y (XX) - A B C (1) 02*

1 2 3 4 5 6 7

- 1. Connector Series**
- 2. (H) Hauteur isolant**
 - H = 63 (Hauteur isolant : 6.35mm)
- 3. Y-Type**
- 4. Number of pins per row**
- 5. Insulator Material Option**
 - A = BK-PBT
 - B = BK-PA66
 - C = BK-PA6T
 - D =BK-PA46
 - E =BK-LCP
- 6. Contact Plating**
 - A = 1U" Gold
 - B = 1.5U" Gold
 - C = 2U" Gold
 - D = 3U" Gold
 - E = 5U" Gold
 - F= Gold Flash/Tin
 - G= Tin
- 7. Post**
 - W (With Post)
 - Ø (No Post)



(02)* = Type 2
(1). Packaging
Ø=PE Bag 1=Tray 2=Tube 3=Tube+Cap 4=Reel+Cap 5=Reel+Mylar

				OPERATION		DRAW	BEN	12.04.18	SCALE	FIT	 votre partenaire en électronique	
				X.X	±0.30				UNIT	mm		
				X.XX	±0.20	CHECK			SIZE	A4	PART NO.	2363D - 1YXX - XXX 02
				X.XXX	±0.10				SHEET	1/1	TITLE:	2.00PF H6.35mm 1xNpin 180°
REV	DATE	MODIFICATION DESCRIPTION	CHANGE	DIM	TOL	APPROVE			PROJ.	◆		

FEMALE HEADER DIP SINGLE ROW Y-TYPE

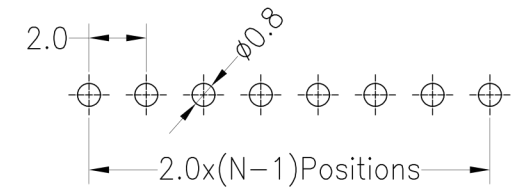
23 SERIES - 2.00MM PITCH



Specifications

- Rated Current: 1.5AMP
- Contact Resistance: 20mΩ Max
- Withstand Resistance: 500V AC/DC
- Insulation Resistance: 1000MΩ Min
- Operation Temperature: -40°C to +105°C
- Contact Material: Brass
- Contact Plating : Au Or Sn Over Ni
- Insulator Material : Polyester (UL94V-0)
- Standard : PA6T
- Max. Processing Temp : 230° for 30-60 seconds
260° for 10 seconds

Recommended P.C.B Layout(Top Side)
(PCB BOARD TOLERANCE±0.05)



Ordering Information

2365D - 1 Y (XX) - A B C (1)

1. Connector Series

2. (H) Hauteur isolant

- H = 65 (Hauteur isolant : 6.5mm)

3. Y-Type

4. Number of pins per row

5. Insulator Material Option

- A = BK-PBT
- B = BK-PA66
- C = BK-PA6T
- D = BK-PA46
- E = BK-LCP

6. Contact Plating

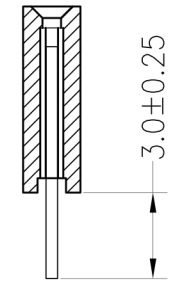
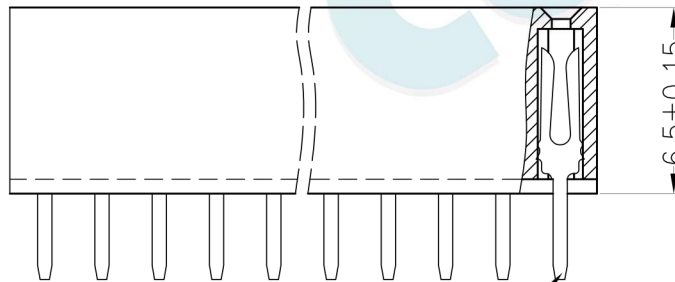
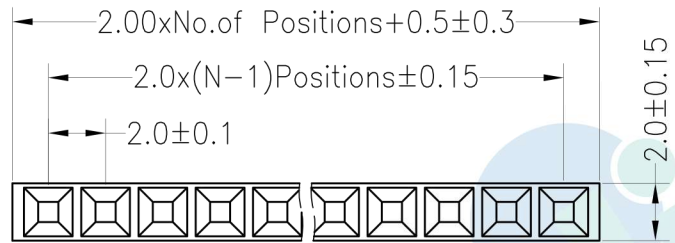
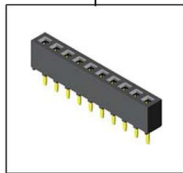
- A = Gold Flash
- B = 5U" Gold
- C = 10U" Gold
- D = 15U" Gold
- E = 30U" Gold
- F = Gold Flash/Tin
- G = Tin

7. Post

- W (With Post)
- Ø (No Post)

(1). Packaging

Ø=PE Bag 1=Tray 2=Tube 3=Tube+Cap 4=Reel+Cap 5=Reel+Mylar



PIN 0.5x0.4

				OPERATION		DRAW	BEN	12.04.18	SCALE	FIT	 votre partenaire en électronique		
				X.X	±0.30				UNIT	mm			
				X.XX	±0.20	CHECK		SIZE	A4	PART NO.			2365D - 1YXX - XXX
				X.XXX	±0.10	APPROVE		SHEET	1/1	TITLE:			2.00PF H6.35mm 1xNpin 180°
REV	DATE	MODIFICATION DESCRIPTION	CHANGE	DIM	TOL			PROJ.	◆				