

PIN HEADER SMT SINGLE ROW

14 SERIES - 1.27MM PITCH



Recommended P.C.B Layout(Top Side)
(PCB BOARD TOLERANCE±0.05)

Specifications

- Rated Current: 1.0AMP
- Contact Resistance: 20mΩ Max
- Withstand Resistance: 500V AC/DC
- Insulation Resistance: 1000MΩ Min
- Operation Temperature: -40°C to +105°C
- Contact Material: Brass
- Contact Plating : Au Or Sn Over Ni
- Insulator Material : Polyester (UL94V-0)
- Standard : PA6T
- Max. Processing Temp : 230° for 30-60 seconds
260° for 10 seconds

Ordering Information

1410S - 11 (XX) - AAA - B C P (1)

1. Connector Series

2. (H) Hauteur isolant

- H = 10 (Hauteur isolant : 1.0mm)

3. Number of pins per row

4. Pin Length

5. Insulator Material Option

- A = BK-PBT
- B = BK-PA66
- C = BK-PA6T
- D = BK-PA46
- E = BK-LCP

6. Contact Plating

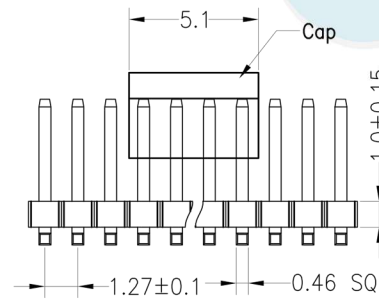
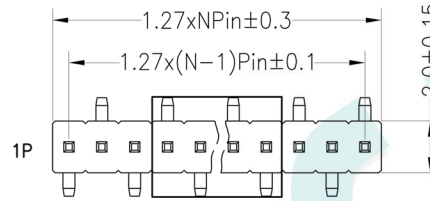
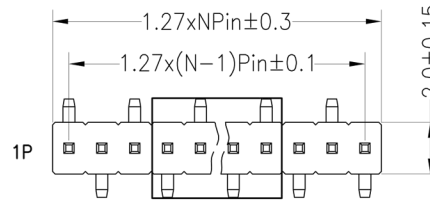
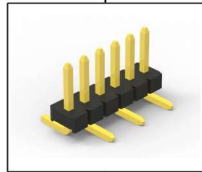
- A = Gold Flash
- B = 1.5U" Gold
- C = 2U" Gold
- D = 3U" Gold
- E = 5U" Gold
- F = Gold Flash/Tin
- G = Tin

7. Post

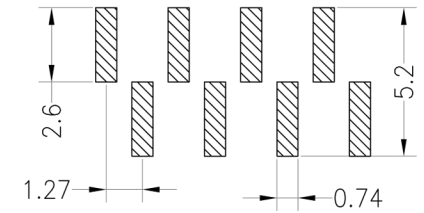
- W (With Post)
- Ø (No Post)

(1). Packaging

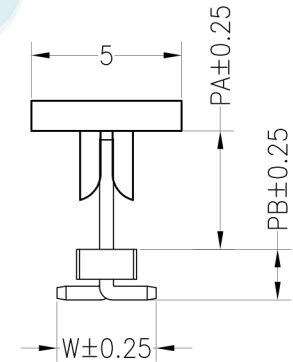
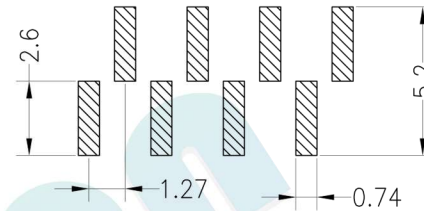
Ø=PE Bag 1=Tray 2Tube 3=Tube+Cap 4=Reel+Cap 5=Reel+Mylar



TYPE2



TYPE1



Dimension antitheses list				
ITEM	PA	PB	W	L
Standard	4.00	1.50	4.20	7.20
Alternate				

OPERATION		DRAW	BEN	12.04.11	SCALE	FIT
X.X	±0.30					
X.XX	±0.20	CHECK			UNIT	mm
X.XXX	±0.10				SIZE	A4
Angle	±3°	APPROVE			SHEET	1/1
DIM	TOL				PROJ.	☯



REV	DATE	MODIFICATION DESCRIPTION	CHANGE
A0	2012.04.11	NEW DRAWING	

PART NO.	TITLE:
1410S - 11XX - XXX - XXX	1.27PH H1.0mm 1xNpin SMT