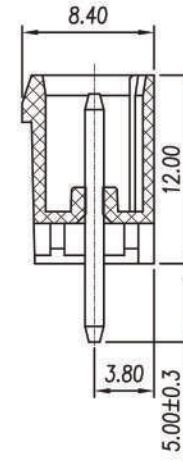
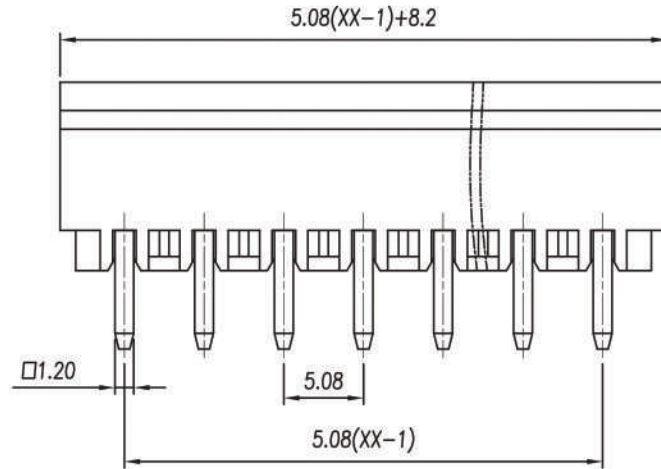
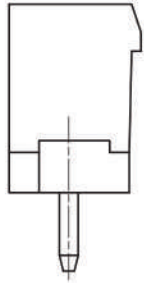


P.C.B. LAYOUT



Approvals



15A 300V

not approved

Electrical

Rated voltage 450V
 Rated current 20A
 Contact resistance 20mΩ
 Insulation resistance 500MΩ/DC500V
 Withstanding voltage AC2000V/ 1min
 Wire range

Torque
 Temp. Range -40°C + 105°C
 Stripping lenght
 Max sold. time +250°C for 5 sec

Dimensions

Pitch 5.08 mm
 Poles 2÷24

Material

Housing PA66 UL94V0
 Pin Copper Alloy, tin plated
 Cage
 Screws
 Side Block
 Nut screw
 Clamp

General description of ordering code

Series	n. Poles	Pitch	Version	Color	Custom
CMP1	02÷24	-5.08	-VP		

Version Date

01/18 07/02/18



UNITS: mm

SHEET SIZE: ISO A4

SCALE: 10:1

> 0 ~ 3

> 3 ~ 18

> 18 ~ 50

> 50 ~ 120

± 0.12

± 0.15

± 0.3

± 0.5



CMP1-5.08-VP